



SN

EASTERN REGION

18

WEEKLY OPERATING NOTICE

CONTAINING

TEMPORARY SPEED RESTRICTIONS

TEMPORARY ENGINEERING WORKS

**SIGNALLING AND
PERMANENT WAY ALTERATIONS**

GENERAL INSTRUCTIONS AND NOTICES

SATURDAY 2 MAY

TO

FRIDAY 8 MAY 1981

INCLUSIVE

Trainmen must pay particular attention to works contained in this notice and keep a good look-out for handsignals which may be exhibited in accordance with the Rules and Regulations.

Work at places other than those mentioned may be in progress and Drivers must be on the look-out and be prepared to stop or run at reduced speed when, and where, handsignals may be exhibited.

SECTION A

TEMPORARY SPEED RESTRICTIONS

(Until further notice unless otherwise specified)

Warning Boards and Indicators provided unless otherwise shown.

†Indicates that the Warning Boards and Indicators will be moved as the work progresses. Where two speeds are shown for a restriction e.g. $\frac{20}{40}$, the Rule Book, Section T, clause 21.2 applies.

Location	Lines affected		Mileage at or between		Restriction m.p.h.	Remarks	
			M.	Ch.			
KINGS CROSS TO DONCASTER (MARSHGATE JN.)							
1 New Southgate and Oakleigh Park	Down Fast	—	7	36	7 41	20	Trackwork. (81/18) Commencing 00 01 Sunday 3 May.
2 New Southgate and Oakleigh Park	Down Slow	—	8	05	8 28	40	Condition of track.(80/34/35)
3 Brookmans Park and Hatfield	Down Fast	—	15	75	16 22	60	Trackwork. (81/17) Until 23 00 Saturday 2 May.
4 Hatfield and Brookmans Park	—	Up Fast	16	22	15 75	20	Trackwork. (81/16) Warning Board also provided on Up Slow at 17m. 46ch.
5 St. Neots and Sandy	—	Up Slow	48	50	47 44	30	Condition of track. (81/13)
6 St. Neots and Sandy	—	Up Slow	50	32	50 18	30	Condition of track.(81/13)
7 St. Neots and Huntingdon	Down Fast	Up Fast	55	74	55 78	70	Earthworks. Commencing 12 00 Saturday 2 until 18 00 Sunday 3 May.
8 St. Neots and Huntingdon	Down Fast	—	58	13	58 17	70	Condition of track. (81/1)
9 Conington and Holme	Down Fast	—	68	52	69 22	30	Trackwork. (81/17) Until 01 15 Sunday 3 May.

SECTION A – TEMPORARY SPEED RESTRICTIONS – continued

Location	Lines affected		Mileage at or between				Restriction m.p.h.	Remarks		
			M.	Ch.	M.	Ch.				
KINGS CROSS TO DONCASTER (MARSHGATE JN.) – continued										
10	Connington and Holme	Down Fast	—		68	62	69	22	60	Trackwork. Commencing 01 15 Sunday 3 until 15 00 Friday 8 May.
11	Connington and Holme	Down Fast	—		68	62	69	22	100	Trackwork, (81/15) Warning Board also provided on Down Slow at 68m. 15ch. Commencing 15 00 Friday 8 May.
12	Connington and Holme	Down Slow	—		69	01	69	11	30	Trackwork, (81/17) Until 01 15 Sunday 3 May.
13	Connington and Holme	Down Slow	—		69	01	69	11	60	Trackwork. Commencing 01 15 Sunday 3 until 15 00 Friday 3 May.
14	Holme and Connington	—	Up Main		69	22	68	62	60	Trackwork, (81/17) Until 01 15 Sunday 3 May.
15	Newark Crossing and Church Lane (CCTV)	Down	—		120	70	121	34	60	Trackwork, (81/16)
16	Church Lane (CCTV) and Newark Crossing	—	Up		121	34	120	70	60	Trackwork, (81/16)
17	Tuxford Emergency Crossover and Askham Tunnel	Down	Up		133	56	133	66	20	Bridgework, (81/17)
18	Doncaster North Jn.	Down Fast	—		156	00	156	20	20	Trackwork, (81/17) Until 14 00 Tuesday 5 May.
19	Doncaster North Jn.	Down Fast	—		156	00	156	20	40	Trackwork, (81/18) From 14 00 Tuesday 5 May.
GRANTHAM NOTTINGHAM BRANCH (LMR) TO BINGHAM STATION (LMR)										
20	Bottesford and Belvoir Jn.	—	Up		112	56	112	18	30	Condition of track, (80/42)

SECTION A - TEMPORARY SPEED RESTRICTIONS - continued

Location	Lines affected		Mileage at or between				Restriction m.p.h.	Remarks
			M.	Ch.	M.	Ch.		
BOTTESFORD WEST JUNCTION TO NEWARK								
21 Newark Jn. and Lowfield	—	Up	8	40	7	58	20	Condition of track. (80/15)
BARKSTON SOUTH JN. TO SKEGNESS								
22 Swineshead and Hubberts Bridge LC	Down	Up	133	25	133	55	15	Trackwork. (81/14)
23 Wyberton L.C. and West St. Jn. L.C.	Down	Up	136	70	137	06	15	Trackwork. (81/17)
24 High Ferry L.C. and Sibsey L.C.	Single		111	65	112	04	15	Trackwork.
MARCH EAST JN. TO PETERBOROUGH (CRESCENT JN.)								
25 Peterborough and Kings Dyke	—	Up	99	44	99	24	10	Bridgework. (80/36)
HELPSTON TO LUFFENHAM L.M.R.								
26 Stamford and Uffington	—	Up	10	56	11	55	30	Condition of track. (80/31)
WHITEMOOR JN. TO GAINSBOROUGH TRENT EAST JN.								
27 Blotoft Sidings L.C. and Gosberton	—	Up	52	66	52	08	30	Condition of track and trackwork.
28 Sleaford South Jn. and Helpringham	—	Up	60	53	60	26	20	Trackwork. (81/5)
29 Helpringham and Sleaford South Jn.	Down	—	61	00	61	08	40	Trackwork. (80/50)
30 Sleaford North Jn. LC and Blankney LC	Down	Up	65	50	66	00	20	Trackwork. (81/14)
31 Sykes Jn.	Down	—	90	01	90	03	30	Bridgework. (81/18) From 09 00 Sunday 3 until 14 00 Wednesday 6 May.
32 Stow Park LC and Lea Road	Down	—	96	13	96	60	40	Trackwork. (81/18) From 08 00 Sunday 3 May.

SECTION A - TEMPORARY SPEED RESTRICTIONS - continued

Location	Lines affected		Mileage at or between		Restriction m.p.h.	Remarks
			M.	Ch.		
WHITEMOOR JN. TO GAINSBOROUGH TRENT EAST JN. - continued						
33 Lea Road and Stow Park LC	—	Up	96	60	96 13	20 Trackwork. (81/18) From 08 00 Sunday 3 May.
34 Gainsborough Lea Road and Stow Park L.C.	—	Up	97	00	96 78	30 Condition of track. (81/13) Until 08 00 Sunday 3 May.
GAINSBOROUGH TRENT WEST JN. TO DONCASTER DECOY NORTH JN.						
35 North Carr L.C. and Walkeringham L.C.	—	Up	103	70	103 62	20 Trackwork. (81/18) From 23 30 Saturday 2 May.
36 Walkeringham L.C. and North Carr L.C.	Down	Up	104	38	104 48	40 Bridgeworks. (80/42)
37 Haxey L.C. (CCTV) and Park Drain L.C. (CCTV)	Down	—	106	24	108 52	40 Trackwork. (81/13)
38 Park Drain L.C. (CCTV) and Haxey L.C. (CCTV)	—	Up	108	52	106 24	20 Trackwork. (81/13)
SLEAFORD WEST JN. TO SLEAFORD NORTH JN.						
39 Sleaford West Jn. and Sleaford No. Jn.	Single		1	36	2 45	40 Trackwork. (80/44)

At or between	Lines affected	Remarks
KINGS CROSS TO DONCASTER (MARSHGATE JN.)		
UNTIL FURTHER NOTICE		
40 Kings Cross	Platforms 1 to 8	09 00 to 16 30. Thu and Fri. Cleaning flushing aprons. (79/18)
41 Frinkley Lane L.C.	Down	08 00 to 16 00. Earthworks, 114m. 56ch. and 114m. 60ch. Mechanical equipment in use. (80/48)
42 Newark South and Newark Crossing	All	07 00 to 17 00. Signalling work. (81/15)
43 Newark Crossing and Bathley Lane	All	07 00 to 18 00. Bridgework, 120m. 78ch. (No. 278). Mechanical equipment in use. (81/15)
44 Tuxford Emergency Crossover and Grove Road L.C.	Down and Up	07 00 to 17 00. Bridgework (No.295), 133m. 61ch. (81/14)
45 Rossington L.C. and Loversall Carr Jn.	All	08 00 to 16 00. Earthwork, 151m. 29ch. and 152m. 36ch. (80/42)
46 Black Carr Jn. and Decoy North Jn.	All	07 00 to 17 00. Bridgework at 153m. 35ch. (80/32)
47 Doncaster South Yorkshire Jn. and Doncaster North Jn.	Down Platform Loop, Bay 6 and 7	07 30 to 16 00. Platform work, track maintenance and demolition work 155m. 70ch. and 156m. 10ch. Restricted clearance. Crane and mechanical equipment in use.
48 Doncaster North	Bay 6 BLOCKED	Continuously. Platform work 156 m.p. and 156m 10ch. Mechanical equipment in use. (81/18) From 22 30 Saturday 2 May.
SATURDAY/SUNDAY 2/3 MAY		
49 Potters Bar and Hatfield	Down Fast BLOCKED Up Fast BLOCKED	23 00 to 13 00) Track renewal between) 15¼ and 16¼ m.p. and 23 00 to 16 00) track maintenance) between 16½ and 16¾ m.p. 23 00 to 13 00. Isolation of electrical sections 16 AB 17 BC. Trains to travel over Slow lines. Mechanical equipment in use.
50 Tallington and New England	Up Slow BLOCKED	22 00 to 10 00. Track renewal between 85 and 84¾ m.p. Trains to travel over Fast line. Spalding branch trains not affected.
51 Doncaster South Yorks Jn. and Marshgate Jn.	Down and Up Fast BLOCKED	23 30 to 09 15. Track maintenance 155m. 66ch. and 156m. 24ch. Trains to travel on other lines.
52 Doncaster North	Middle Road BLOCKED	22 30 to 16 00. Platform work 156 m.p. and 156m. 10ch. Mechanical equipment in use.

SECTION 8 -- TEMPORARY ENGINEERING WORKS -- continued

At or between	Lines affected	Remarks
KINGS CROSS TO DONCASTER (MARSHGATE JN.) -- continued		
SUNDAY 3 MAY		
53 Hornsey and Oakleigh Park	All) 00 01 to 05 00. Signalling work.))
Wood Green and Gordon Hill	Down and Up))
54 Wood Green and New Barnet	Down and Up Fast BLOCKED	00 01 to 16 00.) Earthworks between) 5¼ and 6m.p. and) formation renewal) between 7¼ and 7½m.p.) 00 01 to 16 00.) Isolation of electrical
Hatfield and Wood Green	Up Slow BLOCKED (to electric trains)	00 45 to 01 15 sections 12A, 13DE, 00 45 to 01 15. Isolation of electrical section 11 complete. Trains to travel over Slow lines. Mechanical equipment in use.
55 Hitchin (North) and Biggleswade	Down Slow BLOCKED Down Fast Between Trains) 00 01 to 17 00. Bridgework at 38m. 24ch. and) loading material 32¼ and 33¼m.p. Trains to) travel over Fast lines. Crane in use.))
Sandy and Hitchin (North)	Up Slow BLOCKED Up Fast Between Trains))))
56 Connington and Yaxley	Down Fast/Main and Up Main BLOCKED	01 15 to 10 20. Track maintenance and unloading materials between 67m. 30ch. and 72¾m.p. ECML trains diverted via Cambridge. Mechanical equipment in use.
57 Peterborough and Stoke	All	07 00 to 16 00. Signalling work, testing standby generator.
58 Newark Crossing and Carlton LC	Down BLOCKED Up	03 35 to 10 55. Track maintenance 126m. 15ch. and 126m. 27ch.
59 Toxford Emergency Crossover and Grove Road LC	Down BLOCKED Up BLOCKED	03 50 to 11 00) Bridgework (295) and) track maintenance 05 00 to 08 45) 133m. 40ch. and) 136m. 33ch. Mechanical) equipment in use.
TUESDAY - WEDNESDAY 5/6 MAY		
60 Doncaster South Yards Jn. and Marshgate Jn.	Down Fast BLOCKED Sheffield and Barns Lockins	23 00 to 06 00. Track maintenance 166m. 73ch. and 156m. 20ch. Mechanical equipment in use. Possession to be given up for passage of trains.
THURSDAY 5 and FRIDAY 6 MAY		
61 Toxford Emergency Crossover and Grove Road LC	Down BLOCKED	03 35 to 07 00 daily. Track maintenance 132m. 43ch. and 134m. 07ch. Mechanical equipment in use.

TABLE 2 - TEMPORARY ENGINEERING WORKS - continued

Work location	Lines affected	Remarks
TABLE 2A - TO DONCASTER (MARSDALE JN.) - continued		
WEDNESDAY 6 TO THURSDAY 7 MAY		
11 Doncaster South Works Jn.	No. 2 Bay BLOCKED	08 00 to 16 00. Track maintenance 155m. 66ch. and 155m. 76ch.
WEDNESDAY 6 TO FRIDAY 8 MAY		
12 King's Cross	Platform No. 3 BLOCKED	10 30 to 15 45 daily. Platform work. Possession to be given up to platform 3805, 13 17 Tue to Fri. Stevenage to King's Cross and 1413, 09 33 Fri. Hull to King's Cross. Mechanical equipment in use.
13 Hitchin (North) and Buggleswood	Down Slow BLOCKED	08 30 to 16 00 daily. Earthworks between 37 and 40¼m.p. Trains to travel over Fast line. Mechanical equipment in use.
14 Peterborough Station (North) and Yaxley	Up Slow No. 1/ Up Slow BLOCKED	08 45 to 17 00 daily. Platform work at 76m. 29ch. Trains to travel over other lines.
15 Newark North and Newark Crossing	Down/Up Passenger Loop, Down/Up Goods	07 30 to 16 30 daily. Bridgework (276) at 120m. 27ch. Restricted clearance.
16 Noddy North Jn. and Bridge Jn.	Up West Goods and Transfer Line Belmont Yard BLOCKED	08 00 to 16 00 daily. Earthworks 154m. 30ch. and 154m. 60ch. Possession to be given up for passage of trains.
WEDNESDAY 6 MAY		
17 Wood Green and New Earsel	Down and Up Fast BLOCKED	00 35 to 05 40. Track maintenance between 5 and 8¼m.p. Trains to travel over Slow lines. Mechanical equipment in use.
18 St. Neots and Huntingdon	Down and Up Fast BLOCKED	00 20 to 06 05. Track maintenance between 53 and 58¼m.p. Trains to travel over Slow lines. Mechanical equipment in use.
WEDNESDAY 6 and THURSDAY 7 MAY		
19 Sawery Emergency Crossover and Lowermill Carr Jn.	Up BLOCKED	04 20 to 06 10 daily. Track maintenance, 148m. 63ch. Single line working over Down.
THURSDAY 7 MAY		
20 Ectons Road and Rushden	Down and Up Fast BLOCKED	00 25 to 05 40. Track maintenance between 12¼ and 17¼m.p. Trains to travel over Slow lines. Mechanical equipment in use.
21 Peterborough Station (North) and Tellington	Down and Up Fast BLOCKED	01 25 to 06 35. Track maintenance between 76¼ and 78m.p. Trains to travel over Slow lines. Possession to be given up for passage of 6045. 01 45 Peterborough to Fleet River and 1603. 02 59 Peterborough to Grimby. Mechanical equipment in use.
22 Stoke and Little Bytham	Up Slow BLOCKED	00 01 to 06 00. Track maintenance between 80 and 94¼m.p. Trains to travel over Fast line. Mechanical equipment in use.

SECTION B – TEMPORARY ENGINEERING WORKS – continued

At or between	Lines affected	Remarks
KINGS CROSS TO DONCASTER (MARSHGATE JN.) – continued		
FRIDAY 8 MAY		
74 Connington and Yaxley	Down Fast/Main BLOCKED) 02 25 to 05 30. Track maintenance between 68¼ and 69¼m.p. Possession to be given up for passage of 4L65, 21 40 Tilbury to Leeds and 1B50, 02 00 Kings Cross to Peterborough over Down Slow Connington to Holme and Down Main Holme to Yaxley. Mechanical equipment in use.
Connington and Holme	Down Slow BLOCKED	
75 Yaxley and Peterborough Station (North)	Down and Up Fast BLOCKED	00 01 to 06 00. Track maintenance between 75 and 76¼m.p. Trains to travel over Slow lines. Mechanical equipment in use.
76 Tallington and Little Bytham	Down Slow BLOCKED	00 01 to 06 00. Track maintenance between 88¼ and 90¼m.p. Trains to travel over Fast lines. Mechanical equipment in use.
77 Grove Road LC and Tuxford Emergency Crossover	Up BLOCKED	03 45 to 06 35. Track maintenance 134m 7ch and 133m 43ch. Mechanical equipment in use. Single line working over Down.

FREIGHT TERMINAL JN. TO CAMDEN ROAD JN.**TUESDAY 5 and WEDNESDAY 6 MAY**

78 Freight Terminal Jn. and Camden Road Jn.	Single Between Trains	08 00 to 16 00 daily. Unloading materials.
---	--------------------------	--

WOOD GREEN TO LANGLEY JN. VIA HERTFORD**SUNDAY 3 MAY**

79 Hornsey and Oakleigh Park	All) 00 01 to 05 00. Signalling work.
Wood Green and Gordon Hill	Down and Up	

SUNDAY 3 MAY

80 Gordon Hill and Hertford North	Down BLOCKED	00 40 to 06 30. Loading materials between 10 and 19¼m.p. Single line working over Up line.
81 Hertford North and Langley Jn.	Down BLOCKED Up BLOCKED (to electric trains)	08 00 to 16 00. Overhead line work between 12m. 70ch. and 27¼m.p. Isolation of electrical sections 79 and 80 complete. Wiring train in use.

SECTION B – TEMPORARY ENGINEERING WORKS – continued

At or between	Lines affected	Remarks
HITCHIN, CAMBRIDGE JN. TO CAMBRIDGE, COLDHAM LANE JN.		
UNTIL FURTHER NOTICE		
82 Ashwell and Royston	Down and Up	Bridgework at 43m. 57ch. (Bridge 18A). (80/33)
83 Coldham Lane and Cambridge South	All	Continuously. Track renewals, bridgework and earthworks. Mechanical equipment in use. (79/5)
84 Royston and Meldreth	Down and Up Between Trains	Continuously. Bridgework No.20A. Cranes and mechanical equipment in use. (30/40)
MONDAY 4 MAY		
85 Letchworth and Royston	Down and Up BLOCKED	01 00 to 04 00. Overhead line work between 35m. 42ch. and 36m. 4ch. Isolation of electrical sections 81A,B,C, 82D,J,K, 83 and 84 complete.
TUESDAY 5 and WEDNESDAY 6 MAY		
86 Baldock and Royston	Down and Up BLOCKED	02 15 to 04 10 daily. Overhead line work between 44 and 45m.p. Isolation of electrical sections 83 and 84 complete. Possession to be given up for passage of 8B93 00 01 Whitemoor to Hitchin.
THURSDAY 7 and FRIDAY 8 MAY		
87 Letchworth and Royston	Down and Up BLOCKED	02 15 to 04 10 daily. Overhead line work at 36½m.p. Isolation of electrical sections 81AB, 82JK, 83 and 84 complete. Possession to be given up for passage of 8B93 00 01 Whitemoor to Hitchin.
PETERBOROUGH (WERRINGTON JN.) TO SPALDING NO.1		
TUESDAY 5 to FRIDAY 8 MAY		
88 Werrington Jn. and St. James Deeping	Down and Up Between Trains	08 00 to 16 00 daily. Bridgework between 82 and 82½m.p.
BARKSTON SOUTH JN. TO SKEGNESS		
UNTIL FURTHER NOTICE		
89 Sleaford and Boston	All	07 30 to 16 30. Signalling work. (81/9)
90 Boston	Straight Siding	08 30 to 18 00. Demolition work at 106m. 72ch. Mechanical equipment in use. (80/40)
91 Boston and Sibsey	All	07 00 to 17 00. Signalling work (81/15)
92 Boston and Sibsey LC	All (Single)	08 00 to 16 00 daily. Track removal 107m. 07ch. and 112m. 02ch. (81/18) From 08 00 Tuesday, 5 May.
SATURDAY/SUNDAY, 2/3 MAY		
93 Hubberts Bridge and Boston West Jn.	Down and Up BLOCKED	23 00 to 18 00. Track renewal 133m. 40ch. and 137m.p. and 106m. 71ch. and 107m.p. Crane in use.

SECTION B -- TEMPORARY ENGINEERING WORKS -- continued

At or between	Lines affected	Remarks
BARKSTON SOUTH JN. TO SKEGNESS -- continued		
SUNDAY 3 MAY		
94 Sleaford East and Kirkby Laythorpe LC	Down and Up BLOCKED	06 00 to 16 00. Earthworks 121m. 47m. 2m. 121m. 77ch. Mechanical equipment in use. Possession to be given up for passage of trains.

SUNDAY 3 to MONDAY 4 MAY

95 Boston Grand Sluice and Hubberts Bridge	All	00 01 Sun to 06 00 Mon. Signalling work. (See Section C).
--	-----	---

THURSDAY/FRIDAY, 7/8 MAY

96 Ancaster LC and Sleaford	Down Main BLOCKED	22 00 to 06 00. Track maintenance 118m. 73ch. and 119m. 49ch. Mechanical equipment in use.
-----------------------------	-----------------------------	--

STAYTHORPE CROSSING LMR TO LINCOLN PELHAM STREET JUNCTION**UNTIL FURTHER NOTICE**

97 Newark Castle L.C. and Swinderby L.C.	All	07 00 to 17 00. Signalling work. (B 170)
98 Pelham St. Jn.	All	07 00 to 17 00. Bridgework and dislocation work at 41m. 23ch. Restricted clearance. (B 170)

DONCASTER BRIDGE JN. TO ST. JAMES JN.**WEDNESDAY 6 to FRIDAY 8 MAY**

99 Bridge Jn. and St. James Jn.	Down/Up Hexthorpe Goods BLOCKED	23 00 Wed and Thu to 06 00 Thu and Fri. Track maintenance 22m 53ch. and 23m 35m. Mechanical equipment in use. Possession to be given up for passage of trains.
---------------------------------	--	--

MARCH EAST JN. TO PETERBOROUGH CRESCENT JN.**UNTIL FURTHER NOTICE**

100 Kings Dyke and Peterborough	Down and Up	Bridgework between 99½ and 99¾m.p. (Bridge 1838). Crane and mechanical equipment in use. (B 170)
---------------------------------	-------------	--

MARCH EAST JN. TO WHITEMOOR JN.**UNTIL FURTHER NOTICE**

101 Whitemoor Jn. and March East Jn.	All	08 00 to 16 00. S & T work. (B 170)
--------------------------------------	-----	-------------------------------------

SECTION B - TEMPORARY ENGINEERING WORKS - continued

At or between	Lines affected	Remarks
WHITEMOOR JN. TO GAINSBOROUGH TRENT EAST JN.		
UNTIL FURTHER NOTICE		
102	Helpingham and Sleaford South	All 07 30 to 17 00. Signalling work. (80/10)
103	Sleaford Nth. Jn.	Down and Up Main 07 00 to 19 00. Earthworks 63m. 51ch. (81/14)
104	Pelham Street Jn.	All 07 00 to 17 00 daily. Bridgework and demolition work at 82m. 31ch. Restricted clearance. (80/39)
105	Lincoln West Holmes	All 07 30 to 16 30. Signalling work. (81/9)
SATURDAY/SUNDAY 2/3 MAY		
106	Sykes Jn.	Down 22 00 to 09 00) Bridgework (68) at BLOCKED) 90m 2ch. Crane in use. Up 00 01 to 09 00) BLOCKED)
107	Stow Park LC and Lea Road	Down 00 01 to 09 00) Track renewal 96m BLOCKED) 13ch and 96m 60ch. Up 00 01 to 19 00) Mechanical equipment BLOCKED) in use. 09 00 to 19 00. Single line working over Down.
SUNDAY 3 MAY		
108	Blotoft Sidings LC and Sleaford South	Down and Up 07 00 to 17 00. Bridgework at 57m. 53ch. BLOCKED Restricted clearance.
TUESDAY 5 and WEDNESDAY 6 MAY		
109	Blotoft Sidings LC and Gosberton	Up Main 08 00 to 16 00 daily. Track maintenance 55m. BLOCKED 47ch. and 52m. 40ch. Mechanical equipment in use. Single line working over the Down.
THURSDAY 7 MAY		
110	Gainsborough Lea Road and Stow Park	Up 09 15 to 15 15. Track maintenance 96m. 14ch. BLOCKED and 96m. 60ch. Mechanical equipment in use. Single line working over Down.
GAINSBOROUGH TRENT WEST JN. TO DONCASTER DECOY NORTH JN.		
UNTIL FURTHER NOTICE		
111	Walkeringham L.C. and North Carr L.C.	Down and Up 07 00 to 16 00. Bridgework, 104½m. p. and 104m. 46ch. (80/43)
SATURDAY/SUNDAY 2/3 MAY		
112	Beckingham LC and Finningley LC	Down and Up 23 30 to 18 30. Track renewal 103m. 64ch. and BLOCKED 108m. 52ch. Crane and mechanical equipment in use.

SECTION B – TEMPORARY ENGINEERING WORKS – continued

At or between	Lines affected	Remarks
---------------	----------------	---------

GAINSBOROUGH TRENT WEST JN. TO DONCASTER DECOY NORTH JN. – continued**TUESDAY 5 MAY**

113 Haxey LC and Beckingham LC	Up BLOCKED	09 30 to 16 30. Loading materials and track maintenance 103m. 66ch. and 103m. 64ch. Mechanical equipment in use. Single line working over Down.
--------------------------------	----------------------	--

WEDNESDAY 6 MAY

114 Finningley LC and Haxey LC (CCTV)	Up BLOCKED	09 30 to 15 00. Track maintenance 108m. 52ch. and 106m. 24ch. Mechanical equipment in use. Single line working over Down.
---------------------------------------	----------------------	--

SLEAFORD WEST JN. TO SLEAFORD NORTH JN.**UNTIL FURTHER NOTICE**

115 Sleaford West Jn. and Sleaford North Jn.	All	07 00 to 19 00. Earthworks at 2m. 32ch. (81/16)
--	-----	---

SUNDAY 3 MAY

116 Sleaford West Jn. and Sleaford North Jn.	Single BLOCKED	07 00 to 17 00. Track maintenance, 1m. 70ch. and 2m. 9ch. Mechanical equipment in use.
--	--------------------------	--

LAUGHTON EAST JUNCTION TO KIRK SANDALL JUNCTION**UNTIL FURTHER NOTICE**

117 Low Ellers Curve Jn. and Markham Sidgs.	Single	07 00 to 16 00. Bridgework, 15m. 75ch. and 16m.p. (81/3)
118 Markham Sidings	All	07 00 to 16 00. Bridgework 17m 70ch. Mechanical equipment in use.

SUNDAY 3 MAY

119 Firbeck Jn. 'A' and St. Catherines Jn.	Single BLOCKED St. Catherines Run Round BLOCKED	07 00 to 17 00. Loading materials, 14 and 15m.p. Crane in use.
--	---	--

LOW ELLERS CURVE**UNTIL FURTHER NOTICE**

120 Low Ellers Curve Jn. and Potteric Carr Jn.	Low Ellers Curve	07 00 to 16 00. Bridgework, 15m. 75ch. and 16m. 15ch. (81/3)
--	------------------	--

SECTION C

SIGNALLING AND PERMANENT WAY ALTERATIONS

*** Items marked thus will not appear in future issues and a note must be taken of them by all concerned*

DETAILS OF WORK REFERRED TO IN SECTION 'B'

SUNDAY 3 MAY – BETWEEN HUBBERTS BRIDGE AND BOSTON WEST STREET

Wyberton signal box will be reduced in status to a Gate Box.

The line between Hubberts Bridge and Boston West Street will be converted to a Single Line worked in accordance with the Track Circuit Block (Single Line) regulations.

The single line (using for the most part the former Down Main Line) will extend from the crossover adjacent to Sleaford Sidings Ground Frame (which will be worked at the Up Main end only from Boston West Street signal box) to a new double to single line connection (worked at the Up Main end only by Hubberts Bridge signal box).

Reference should be made to the diagram included in this notice.

Signalling Alterations

Boston West Street

The Up Main 2nd Home and Up Main Starting signals will be abolished.

A new Up Main Starting signal to Single line (W.S.17 on the diagram) will be provided 240 yards after passing the signal box and 55 yards before reaching Broadfield Lane level crossing. The arm will be 20ft above rail level and a 'Diamond' sign will be provided on the post of this signal.

A new Up Single Line Starting signal from Down Main (WS.21 on the diagram) will be provided 396 yards after passing the signal box, and 31 yards before reaching Sleaford Sidings ground frame. The signal will be situated on the right-hand (cess) side of the line with the arm 12ft above rail level.

A disc signal operated from Sleaford sidings ground frame and applying towards Sleaford Sidings will be elevated 6ft above rail level on the post of this signal. (Sleaford Sidings ground frame will now only operate this disc signal and the slip points leading to Sleaford Sidings).

Hubberts Bridge

A new Down Single line Starting signal from Down Main (HB11 on diagram) will be provided 133 yards after passing the signal box, with the arm 12ft above rail level.

The Up Main Home will become the Up Single Line Home to Up Main and will be resited 227 yards before reaching (164 yards further) the signal box with the arm 12ft above rail level. A sighting board will be provided. The distance between the Up Distant and this signal will be reduced to 793 yards.

A new Up Main Starting Signal will be provided 504 yards after passing the signal box, with the arm at a height of 15ft above rail level.

All other Up Line signals not included above will apply to the Single Line.

Boston West Street

The Down Siding will be taken out of use and all associated signalling abolished.

SECTION C – SIGNALLING AND PERMANENT WAY ALTERATIONS – continued**DETAILS OF WORK ALREADY CARRIED OUT****SPILSBY & WAINFLEET ROAD LEVEL CROSSING AT 122m. 72ch. (Between Little Steeping and Thorpe Culvert)**

Attendance has been withdrawn from this level crossing. Telephone communication has been provided between the crossing and Little Steeping signal box. (15)

*** * BETWEEN BOSTON GRAND SLUICE AND SIBSEY**

Maud Foster and High Ferry signal boxes have been reduced to status of signal boxes.

The crossover immediately North of Boston Station, is being used for movements Up Single line to Up Main (The Up Main end of the crossover will be secured in the reverse position for through running – Single line to Up Main).

The Down Main between Boston Grand Sluice and Sibsey has been converted to a single line worked in accordance with the Track Circuit Block (single line) Regulations. The redundant Up Main will be subsequently removed.

Reference should be made to the diagram included in this notice.

Signalling Alterations**Boston Grand Sluice**

The Down Main starting signal has been abolished. The Down Main 2nd Home signal has become the Down Single line Starting signal and a 'diamond' sign has been provided on the post of the signal.

The Up Main 2nd Home signal (GS29 on the diagram) with Boston West Street Distant on the same post, has been resited adjacent to the single line and become the Up single line 2nd Home signal.

Sibsey

The Up Distant signal has been replaced 337 yards further from the signal box and 960 yards before reaching the new Up Home (see below).

The Up Home signal (with High Ferry Up Outer Distant below) has been abolished and replaced 460 yards (283 yards further) from the signal box by a new Up Home signal (arm 15ft. above rail level). A 'diamond' sign has been provided. The new signal is positioned 55 yards before reaching Wards Dyke level crossing and ¼ mile before reaching Sibsey level crossing.

The Up Starting signal has also been abolished and the High Ferry Up Inner Distant below has been retained as High Ferry gatebox Up Distant.

High Ferry

The Up Home signal has been resited 55 yards before reaching High Ferry level crossing (45 yards further from the gatebox) and adjacent to the single line.

Up Line signals

All Up line signals not already mentioned will apply to the single line.

Intermediate level crossings:—

Boston Grand Sluice will supervise the following level crossings:—
Tattershall Road, Robin Hoods Walk, Red Cap Lane.

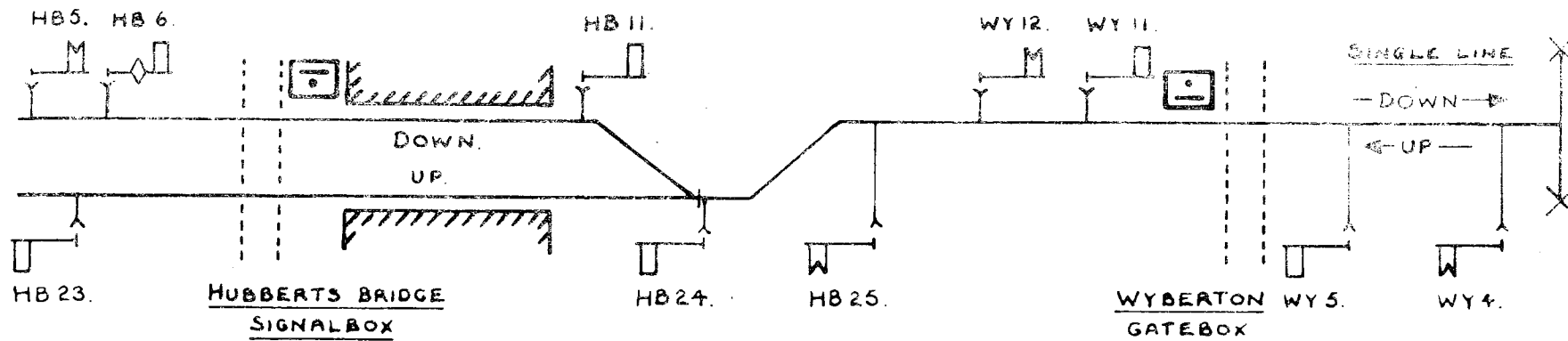
Maud Foster gatebox will continue to supervise Pilleys Lane and Willoughby Road.

Sibsey will supervise the following level crossings:—

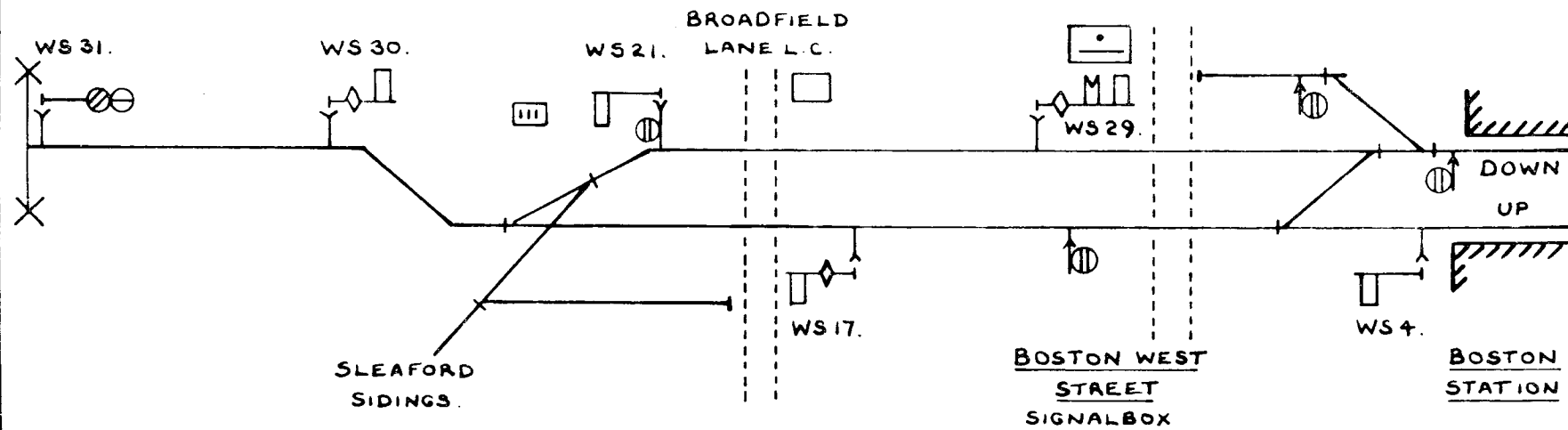
Wells Lane, Hurn Lane No. 1, Hurn Lane No. 2, High Ferry Lane, Wards Dyke. (18)

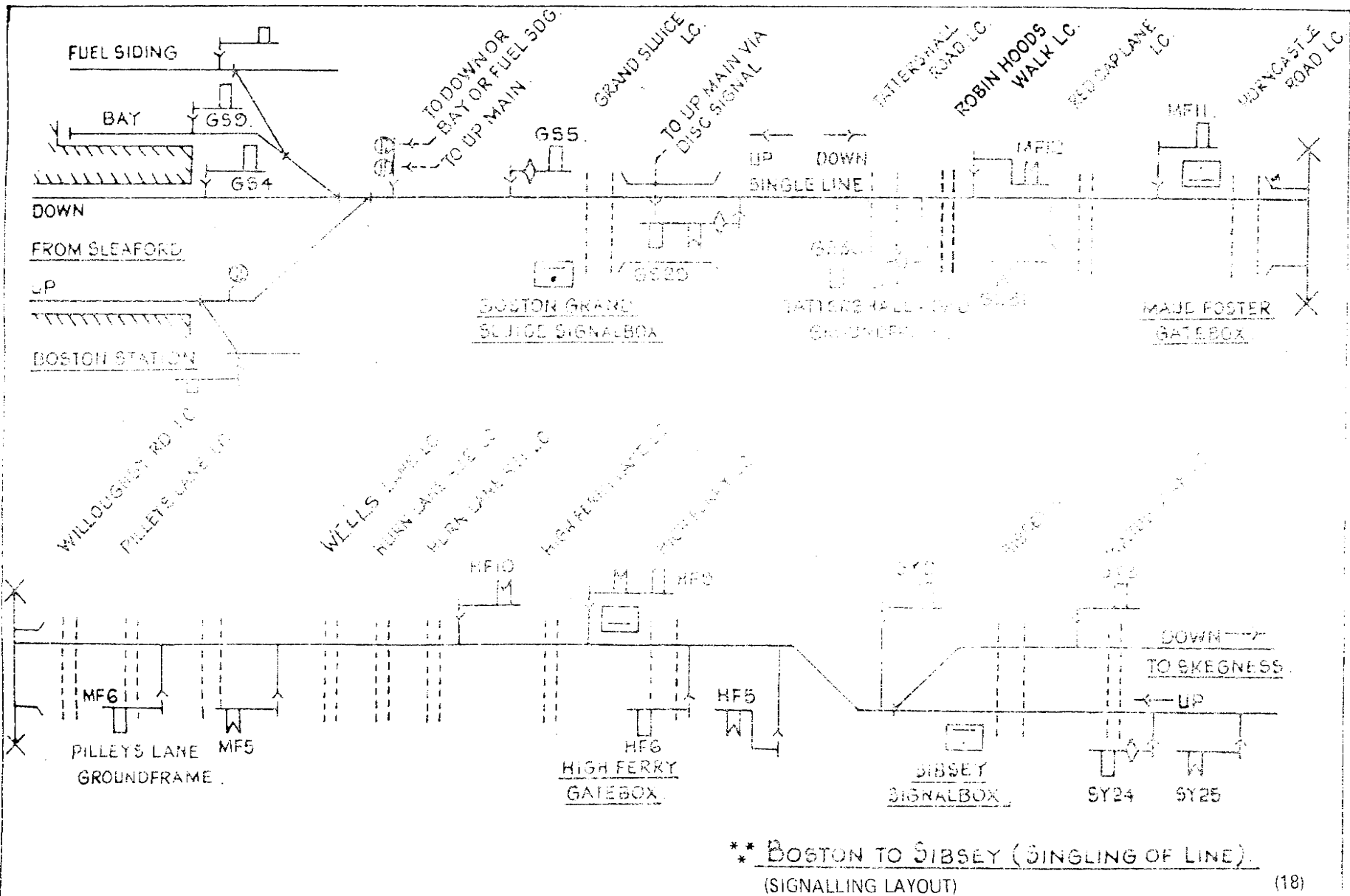
WARDS DYKE LEVEL CROSSING AT 112m. 25ch. (BETWEEN SIBSEY AND BELLWATER JUNCTION)

Attendance has been withdrawn from this level crossing. Telephone communication has been provided between the crossing and Sibsey signal box. (19)



BOSTON TO HUBBERTS BRIDGE (SINGLING OF LINE)
SIGNALLING LAYOUT WEF. 3 MAY 1981.





** BOSTON TO SIBSEY (SINGLING OF LINE).
(SIGNALLING LAYOUT)

GENERAL INSTRUCTIONS AND NOTICES

★ Denotes new or amended items

* Items marked thus will not appear in future issues and a note must be taken of them by all concerned.

E.R. SECTIONAL APPENDIX (SOUTHERN AREA)

TABLE "A" - DETAILS OF RUNNING LINES

Running Lines and Signalling System	Loops and Refuge Sidings	Location	M. Ch.	Permanent Speed Restrictions		Catch, Spring and unworked trailing points
				Down m.p.h.	Up At or Between	

Page 53 (Page 55 Supp. Optg. Insts.)

KINGS CROSS TO DONCASTER MARSHGATE JN.

Between Belmont Down Yard and Sand Bank Jn.

Delete:—

15 15 Down/Up West
Slow 155m. 28ch.
and 155m. 38ch.

Between Bridge Jn. and South Yorkshire Jn.

Amend:—

10 Down/Up West
Slow to
Hexthorpe Down/
Up Goods line. (23D)

Pages 67 and 68

BARKSTON SOUTH JN. TO SKEGNESS

Delete all details Grand Sluice Jn. to Sibsey L.C. and substitute :—

↓	•	↓	Grand Sluice Jn.	107.41	15	107m. 56ch. and 107m. 10ch.
	•				20	107m. 56ch. and 108m. 13ch.
	↑		Tattershall Road L.C.	107.69		
			Robin Hood Walk L.C.	108.04		
			Red Cap Lane L.C.	108.27		
			Maud Foster L.C.	108.65		
			Willoughby Road L.C.	108.69		
			Pilleys Lane L.C.	108.76		
	↓		No.13 Wells Lane L.C.	110.15		
			High Ferry Lane L.C.	111.04		
			High Ferry L.C.	111.23		
•	•	•	Sibsey L.C.	112.07		

(23D)

SECTION D – GENERAL INSTRUCTIONS AND NOTICES – continued

MISCELLANEOUS NOTICES

WORKING MANUAL FOR RAIL STAFF (B.R.30054)

WHITE PAGES PART 6

Clause C1/5

“Austrian Federal Railways – P.O. Wagons, Type 1MB – Series (43) 8126–901000

Add:

These wagons are formed in pairs by a “second” coupling which is held by a pin and split-pin at each end. This is the only fact which distinguishes them from being single wagons and it is not the intention that this link should be removed when the wagons are in transit-

The wagons are permitted to run on Speedlink services but, at any location or marshalling yard, when the wagons are placed in sidings it must be done with extreme care”. (23D)

1. REPRINT OF GENERAL APPENDIX – BR.29944
2. RE-ISSUE OF SIGNALMAN’S GENERAL INSTRUCTIONS – BR.30062
3. RE-ISSUE OF TRACK CIRCUIT BLOCK REGULATIONS – BR.30062/1
4. SUPPLEMENT NO.5 – REGULATIONS FOR TRAIN SIGNALLING AND SIGNALMAN’S GENERAL INSTRUCTIONS –BR.29960/26
5. RULE BOOK AMENDMENT PAGES – ISSUE NO.6 – BR.87109/29

The above mentioned publications are in the course of distribution but will not operate until Saturday, 6 June, 1981.

Any member of the staff who is in possession of the current issue of the General Appendix, Regulations for Train Signalling and Signalmen’s General Instructions or the Rule Book, and has not received a copy of the reprint of the General Appendix; Re-issue of Signalman’s General Instructions – BR.30062; Supplement No.5 to Regulations for Train Signalling and Signalmen’s General Instructions or the Rule Book Amendment pages – Issue No.6, must promptly advise his Supervisor.

The re-issue of Track Circuit Block Regulations, BR.30062/1 will only be issued to those members of the staff directly concerned with the signalling of trains in a Track Circuit Block area. Staff employed on these duties who have not received a copy of the new instructions must immediately advise their Supervisor. (20)

SECTION D - GENERAL INSTRUCTIONS AND NOTICES - continued

MISCELLANEOUS NOTICES - continued

★ REPAIRS IN MOTIVE POWER DEPOT : CARRIAGE SHEDS, WAGON REPAIR SHEDS AND WAREHOUSES

In connection with work being carried out at the undermentioned places, scaffolding or projections may be provided or unusual excavations may be made in the ground :-

Location	Nature of Work	Duration	Commencing date
Hornsey EMU Depot 09 00 to 12 00 Sidings Nos. 18. to 20 BLOCKED Siding No.21 BLOCKED (to electric trains)	Door maintenance Isolation of electrical sections 9Z1, 2, 3, 4.	09 00 to 17 00 Sunday 3 May	
12 00 to 15 00 Sidings Nos.21 to 23 BLOCKED Siding No.20 BLOCKED (to electric trains)	Isolation of electrical sections 9Z3, 4, 5, 6.		
15 00 to 17 00 Siding No.17 BLOCKED Sidings Nos. 14, 15, 16, 18, 19 and connections to Sidings Nos.18 and 19 BLOCKED (to electric trains)	Isolation of electrical sections 9J,K,X,Z1, Z2.		
Hornsey and Wood Green Down Carriage BLOCKED	Washer Plant maintenance.	12 00 to 16 00 Sunday 3 May	
Hornsey EMU Depot Siding No.13 BLOCKED	Washer Plant maintenance Isolation of electrical sections 9L1, 9L2.	14 00 to 17 00 Tuesday 5 May	

MP/32/SN
YORK

G. GRAHAM
CHIEF OPERATING MANAGER

22 APRIL, 1981

Receipt of this notice need not be acknowledged; If the SN Notice is not received by the normal time advise your Supervisor.