



*Rosmarie*

**NN**

EASTERN REGION

**No. 36**

**TEMPORARY SPEED RESTRICTIONS  
PERMANENT WAY OPERATIONS  
SIGNAL ALTERATIONS  
APPENDIX INSTRUCTIONS, ETC.**

**SATURDAY 7 SEPTEMBER  
TO  
FRIDAY 13 SEPTEMBER 1974  
INCLUSIVE**

---

Trainmen must pay particular attention to works contained in this notice and keep a good look-out for hand signals, which will be exhibited at the various localities in accordance with the Rules and Regulations. Work at places other than those mentioned may be in progress, of which it may not have been possible to give previous notice, and drivers must be on the look-out and be prepared to stop or run at reduced speed when and where hand signals may be exhibited.

---

SECTION A

TEMPORARY SPEED RESTRICTIONS

(Until further notice unless otherwise stated)

Warning Boards and Indicators provided unless otherwise shown.

In the case of items marked † The Warning Board(s) will be lit by propane gas.

In the case of items marked \* the Warning Boards and Indicators will be moved as the work progresses and the restriction will not operate over more than ¼ mile at one time.

Where two speeds are shown for a restriction eg.  $\frac{20}{40}$  the Rule Book, Section T, Clause 21.2 applies.

Location of Work at or between	Lines affected		Mileage at or between		Speed Restriction	Remarks
	Down	Up	M. Chs.	M. Chs	m.p.h.	
YORK (CHALONERS WHIN) TO BERWICK (MARSHALL MEADOWS) (REGIONAL BOUNDARY AT 69m. 66chs.) VIA KING EDWARD BRIDGE OR HIGH LEVEL BRIDGE						
*Northallerton and Thirsk	—	Up Slow	28 38	26 50	20	Trackwork. 74/29
Durham Station and Ouston Jn.	Down Main	—	69 56	70 02	20	Trackwork. 74/35
Ouston Jn. and Durham Station	—	Up Main	69 56	69 10	20	Trackwork. Commencing 09 00 Wednesday 11 September. 74/36
Ouston Jn. and Durham Station	—	Up Main	70 02	69 56	20	Trackwork. Until 09 00 Wednesday 11 September. 74/34
Ouston Jn. and Durham Station	—	Up Main	70 02	69 56	40	Trackwork. Commencing 09 00 Wednesday 11 September. 74/36
Low Fell Station Jn. and Ouston Jn.	—	Up Slow	76 37	75 45	20	Trackwork. 74/25
Benton and Heaton North Jn.	—	Up Main	4 40	4 20	60	Condition of track. 74/18
Killingworth and Dudley	Down Main	—	7 55	8 05	20	Ballast cleaning. 74/35
*†Little Mill and Alnmouth	—	Up Main	39 32	38 04	20	Trackwork. Until 14 00 Sunday 8 September. 74/34

SECTION A — TEMPORARY SPEED RESTRICTIONS — continued

Location of Work at or between	Lines affected		Mileage at or between		Speed	Remarks
	Down	Up	M. Chs.	M. Chs.	m.p.h.	
YORK (CHALONERS WHIN) TO BERWICK (MARSHALL MEADOWS) (REGIONAL BOUNDARY AT 69m. 66chs.) VIA KING EDWARD BRIDGE OR HIGH LEVEL BRIDGE – continued						
*†Little Mill and Alnmouth	—	Up Main	39 32	38 04	40	Trackwork. Until 14 00 Sunday 8 September. 74/34
Tweedmouth and Ayton	Down Main	Up Main	66 70	66 74	20	Trackwork 74/35
FERRYHILL (SOUTH JN.) TO NORTON ON TEES SOUTH						
Norton on Tees South Jn. and Norton on Tees West Jn.	—	Up Main	0 30	0 10	20	Trackwork. Until 15 00 Thursday 12 September. 74/35
FERRYHILL (TURSDEALE JN.) TO PELAW VIA LEAMSIDE						
Whitwell and Fencehouses	Down Main	—	6 40	6 48	20	Embankment Slip. 74/34
Whitwell and Fencehouses	Down Main	—	8 74	10 00	20	Trackwork. 74/34
Fencehouses and Washington South	Down Main	Up Main	14 10	15 10	20	Trackwork, bridgework and subsidence. 73/28
CONSETT NORTH TO OUSTON JUNCTION						
Carr House East and Annfield	Down Main	Up Main	9 60	8 55	15	Subsidence. 72/1
Carr House East and Annfield	Down Main	—	8 00	7 68	20	Trackwork. 74/35
Annfield and Beamish	Down Main	—	6 02	5 41	20	Trackwork. 74/30
Beamish and South Pelaw	Down Main	—	3 27	3 01	20	Trackwork. 74/35
NORTHALLERTON (BOROUGHBRIDGE ROAD) TO GATESHEAD (HIGH LEVEL BRIDGE) VIA HORDEN						
*†Long Lane and Picton	Down Main	—	50 70	52 23	20	Trackwork. 74/31
Eaglescliffe (South Jn.) and Picton	—	Up Main	56 04	56 00	20	Trackwork. 74/36 Commencing 10 00 Thursday 12 September.
Seaham and Ryhope Grange	Down Main	Up Main	85 15	85 58	20	Subsidence. 73/32

## SECTION A – TEMPORARY SPEED RESTRICTIONS – continued

Location of Work at or between	Lines affected		Mileage at or between		Speed Restriction	Remarks
	Down	Up	M. Chs.	M. Chs.	m.p.h.	
NORTHALLERTON (BOROUGHBRIDGE ROAD) TO GATESHEAD (HIGH LEVEL BRIDGE) VIA HORDEN—continued						
Wearmouth and East Boldon	Down Main	—	91 29	92 12	20	Condition of track. 74/26
Wearmouth and East Boldon	Down Main	Up Main	92 22	93 06	30	Subsidence. 72/1
SOUTH PELAW TO WASHINGTON CHEMICAL WORKS						
South Pelaw and Washington	Down Main	—	11 40	10 72	10	Condition of track. 74/1
DARLINGTON (SOUTH) TO SALTBURN						
South Bank	—	Up Main	17 10	17 00	20	Condition of track. 73/41
Grangetown and Redcar	—	Up Main	21 33	20 48	20	Trackwork. 74/35
LONGBECK (SALTBURN WEST JN.) TO BOULBY (CLEVELAND POTASH SIDINGS)						
Saltburn West Jn. and Crag Hall	Down Goods Loop	—	27 20	27 70	20	Trackwork. 74/35
NEWCASTLE TO CARLISLE (PETTERIL BRIDGE JN.) EXCLUSIVE (REGIONAL BOUNDARY AT 58m. 60chs.)						
Newcastle and Scotswood	Down Main	—	0 62	1 53	20	Trackwork. Commencing 09 00 Friday 13 September. 74/36
Addison and Wylam	Down Main	—	6 49	7 16	20	Trackwork. 74/31
Low Row and Blenkinsop	—	Up Main	44 00	43 65	20	Trackwork.
HALTWHISTLE TO ALSTON						
Haltwhistle and Alston	Single		12 56	12 67	10	Contractors using accommodation crossing. 73/15
BACKWORTH JUNCTION TO MORPETH VIA SEGHELL						
*Newsham South and Holywell	—	Up Main	11 24	9 20	20	Trackwork. 74/26
Holywell and Newsham South	Down Main	—	11 20	12 00	20	Condition of track 72/11

## TEMPORARY ENGINEERING WORKS

(For Details of Signalling or Permanent Way Alterations See Section 'C')

Where any work involves fixing, removing or repairing of signals, or the protection of the running line during renewals, repairs and obstructions, Handsignalmen will be provided by the Engineer to act in accordance with the Rules and Regulations.

Material may be lying about and disconnections may be made as required.

Unless otherwise shown, work will be carried out as traffic permits.

At or between	Lines affected	Remarks
<b>YORK (CHALONERS WHIN) TO BERWICK (MARSHALL MEADOWS) (REGIONAL BOUNDARY AT 69m. 66chs.) VIA KING EDWARD BRIDGE OR HIGH LEVEL BRIDGE</b>		
<b>DAILY UNTIL FURTHER NOTICE</b>		
Darlington (South Jn. and North Jn.)	All Station Lines	08 00 to 17 00. Platform work.
Parkgate Jn. and Ferryhill (South Jn.)	Down	07 00 to 17 00. Earthwork between 55m. 36chs. and 55m. 55chs. Off track machines in use. 74/25
Tursdale Jn. and Durham Station	Down	07 30 to 16 30. Earthwork between 64m. 50chs. and 65¼m.p. Off track machines in use.
Durham Station and Ouston Jn.	Down and Up	07 00 to 17 00. Earthwork at 67m. 61chs. Off track machines in use.
Newcastle	East End Bay Platforms <b>BLOCKED</b>	22 00 Sun to Fri to 06 00 Mon to Sat. Platform work. Crane and Off track machines in use.
Newcastle	East End Bay Platforms	08 00 to 16 30 Sun to Fri. Platform work. Crane and Off track machines in use.
Heaton South Jn. and Manors Jn.	Up Tynemouth	08 00 to 17 00. Earthwork between 1m. 4chs. and 0¼m.p. Off track machines in use.
Stannington and Morpeth	Down and Up	08 00 to 16 30. Work at Clifton level crossing. 74/31
Morpeth and Longhirst	Down and Up	06 00 to 18 00. Earthwork at 17m. 64chs. Off track machines in use.
Alnmouth	Down Sidings	08 00 to 17 00. Trackwork. Off track machines in use.
Christon Bank	Down	08 00 to 17 00. Demolishing part of signal box. <b>Commencing Monday 9 September</b> 74/36
Chathill and Lucker	Down and Up	07 00 to 18 00. Boring rig in operation between 47 and 47¼m.p. 74/35
Beal	Down and Up	07 00 to 18 00. Boring rig in operation at 58¼m.p.
Tweedmouth and Goswick	Up Main	08 00 to 17 00. Earthwork between 61¼ and 61m.p. Off track machines in use.
Tweedmouth	Sidings	08 00 to 16 00. Trackwork. Off track machines in use. 74/31
<b>SUNDAY 8 SEPTEMBER</b>		
York Station and Skelton	Down Main Station Line 'W' Station Line 'X' and Loco Inlet	06 00 to 14 00. Trackwork between 0m. 15chs. and 0m. 30chs.
Tollerton and Skelton Bridge	Up Slow <b>BLOCKED</b>	06 00 to 21 00. Research Train in use between 9m. 50chs. and 5m. 36chs. <b>Trains to travel on Fast.</b>

## SECTION B – TEMPORARY ENGINEERING WORKS – continued

At or between	Lines affected	Remarks
<b>YORK (CHALONERS WHIN) TO BERWICK (MARSHALL MEADOWS) (REGIONAL BOUNDARY AT 69m. 66chs) VIA KING EDWARD BRIDGE OR HIGH LEVEL BRIDGE – continued</b>		
<b>SUNDAY 8 SEPTEMBER – continued</b>		
Pilmoor and Thirsk	Down and Up Fast <b>BLOCKED</b>	06 00 to 16 00. Trackwork between 16m. 38chs. and 20m. 18chs. <b>Trains to travel on Down and Up Slow.</b>
Thirsk	Down Slow and Down Yard	07 30 to 17 00. Signalling work.
Darlington	Down and Up Main	07 00 to 15 00. S & T work.
Ferryhill South Jn. and Tursdale Jn.	Down and Up Leamside	07 30 to 16 30. Trackwork between 56½m.p. and 58¾m.p.
Tursdale Jn. and Durham Station	03 15 to 12 30 Up Main <b>BLOCKED</b> 03 45 to 07 30 Down Main <b>BLOCKED</b> 07 30 to 16 00 Down Main <b>Between Trains</b>	03 15 to 12 30. Trackwork between 61m.p. and 62m. 10chs. Bridgework No. 176. 08 00 to 16 00. Earthwork between 63m.p. and 63m. 10chs. <b>07 30 to 12 30. Single Line Working over Down Main for Shuttle service between Darlington and Durham. 04 30 to 12 30. Through trains diverted via Leamside.</b> On and off track machines and viaduct inspection unit in use.
Durham Station and Ouston Jn.	Down Main <b>BLOCKED</b> 03 45 to 12 30 Up Main <b>BLOCKED</b> 03 00 to 12 30	03 00 to 12 30. Trackwork between 69m. 56chs. and 73m. 21chs. <b>Trains diverted via Leamside.</b> Crane and on track machines in use.
Tyne	All	07 30 to 17 00. S & T work.
Low Fell Station Jn. and Tyne	Up Main <b>BLOCKED</b>	03 00 to 12 30. Trackwork between 76¾m.p. and 76½m.p. <b>Through trains diverted via Leamside.</b>
Newcastle	07 30 to 10 30 Up South <b>BLOCKED</b> 10 30 to 15 00 Down East <b>BLOCKED</b> 15 00 to 17 00 Down East <b>Between Trains</b>	07 30 to 17 00. Trackwork.
Newcastle	All at West End	07 00 to 17 00. Trackwork.
Newcastle	All at East End	07 30 to 16 30. Trackwork. On track machines in use.
Heaton	Down and Up Main	07 30 to 18 00. S & T work.
Killingworth and Dudley	05 30 to 11 15 Up <b>BLOCKED</b> 06 00 to 14 00 Down <b>BLOCKED</b> 14 00 to 16 30 Down <b>Between Trains</b>	05 30 to 16 30. Trackwork between 7m. 55chs. and 8m. 5chs. <b>Possession given up to pass 1S37. 11 25 Newcastle to Edinburgh on Up Main under Single line working conditions.</b> On track machines in use.
Stannington	Down Main	12 00 to 16 30. Trackwork between 11m. 40chs. and 13m. 60chs. On track machines in use.
Morpeth	Up	07 00 to 17 00. Trackwork.

## SECTION B – TEMPORARY ENGINEERING WORKS – continued

At or between	Lines affected	Remarks
<b>YORK (CHALONERS WHIN) TO BERWICK (MARSHALL MEADOWS) (REGIONAL BOUNDARY AT 69m. 66chs.) VIA KING EDWARD BRIDGE OR HIGH LEVEL BRIDGE – continued</b>		
<b>SUNDAY 8 SEPTEMBER – continued</b>		
Widdrington North and Longhirst	Up Main <b>BLOCKED</b>	05 15 to 11 15. Trackwork between 24m. 10chs. and 22m. 40chs. On track machines in use.
Chevington and Alnmouth	Down Main <b>BLOCKED</b>	06 30 to 11 45 Trackwork between 30m. 60chs. and 31m. 60chs. On track machines in use. Walkworth auto barriers manned.
Alnmouth and Chathill	03 45 to 17 30 Up <b>BLOCKED</b> 03 45 to 06 30 Down <b>Between Trains</b> 06 30 to 11 00 Down <b>BLOCKED</b> 11 00 to 17 30 Down <b>Between Trains</b>	03 45 to 17 30. Trackwork between 38m. 32chs. and 39m. 32chs. <b>Possession given up to pass 1E51 on Down Main under Single Line Working Conditions. 11 00 to 17 30. Single line working over Down Main.</b> Crane and on track machines in use. Falloden auto barriers manned.
Christon Bank and Chathill	All	00 01 to 18 30. Signalling alterations. (See Section 'C'). 06 00 to 15 00. Demolishing part of Christon Bank signal box. Off track machines in use.
Beal	04 45 to 10 45 Up <b>BLOCKED</b> 06 45 to 12 15 Down <b>BLOCKED</b>	04 45 to 12 15. Trackwork between 58m. 52chs. and 59m. 30chs. On track machines in use.
Tweedmouth and Ayton	04 30 to 07 15 Down <b>Between Trains</b> 07 15 to 19 00 Down <b>BLOCKED</b> 04 30 to 10 45 Up <b>BLOCKED</b> 04 30 to 19 00 Down Goods <b>BLOCKED</b>	04 30 to 19 00. Trackwork between 66m. 70chs. and 66m. 74chs. (Down). <b>10 45 to 19 00. Single Line Working over Up Line between Ayton and Tweedmouth.</b> Crane in use.
<b>MONDAY 9 to THURSDAY 12 SEPTEMBER</b>		
Belford	Up and Down	08 30 to 15 30. Trackwork between 51m. 40chs. and 51m. 60chs. On track machine in use.
<b>TUESDAY 10 SEPTEMBER</b>		
Thirsk and Pilmoor	Up Fast <b>BLOCKED</b>	02 30 to 07 15. Trackwork between 22¼m.p. and 16m.p. <b>Trains to travel on Slow.</b> On track machines in use.
Northallerton and Thirsk	Up Fast <b>BLOCKED</b>	13 30 to 15 00. Trackwork between 28½ and 22¼ m.p. <b>Up trains to travel on Up Slow.</b>
<b>WEDNESDAY 11 SEPTEMBER</b>		
Pilmoor and Tollerton	Up Fast <b>BLOCKED</b>	02 30 to 07 15. Trackwork between 15¼ and 9¾m.p. <b>Up trains to travel on Up Slow.</b> On track machines in use.
<b>THURSDAY 12 SEPTEMBER</b>		
Northallerton and Thirsk	Up Fast <b>BLOCKED</b>	02 30 to 07 15. Trackwork between 28½ and 22½ m.p. <b>Trains to travel on Slow.</b> On track machines in use.

**SECTION B – TEMPORARY ENGINEERING WORK – continued**

At or between	Lines affected	Remarks
<b>YORK (CHALONERS WHIN) TO BERWICK (MARSHALL MEADOWS) (REGIONAL BOUNDARY AT 69m. 66chs.) VIA KING EDWARD BRIDGE OR HIGH LEVEL BRIDGE – continued</b>		
<b>FRIDAY 13 SEPTEMBER</b>		
Tollerton and Skelton Bridge	Up Fast <b>BLOCKED</b>	02 45 to 07 30. Trackwork between 10 and 3½ m.p. <b>Trains to travel on Slow.</b> On track machines in use.
Ayton and Tweedmouth	Up	08 30 to 15 30. Trackwork between 67m. 70chs. and 67m. 5chs. On track machine in use.

**DARLINGTON NORTH JN. TO BISHOP AUCKLAND EAST**

**DAILY UNTIL FURTHER NOTICE**

Darlington (Parkgate Jn.) and Hopetown Jn.	Down and Up Bishop Auckland and Down and Up Goods	06 00 to 20 00. Platform work. at North Road.	74/23
Heighington and Shildon	Down	07 30 to 16 30. Trackwork between 6¼ and 7m.p. Off track machines in use.	74/32
Heighington and Shildon	All	07 30 to 19 00. Bridgework No.5. Crane and off-track machine in use.	74/34

**SUNDAY 8 SEPTEMBER**

Darlington (Parkgate Jn.) and Hopetown Jn.	Down and Up Goods <b>BLOCKED</b>	06 00 to 18 00. Platform work between 0m. 42chs. and 0m. 55chs. At North Road station.
Heighington and Shildon	Down and Up <b>BLOCKED</b>	07 30 to 16 30. Trackwork between 5m. 78chs. and 6m. 25chs. Crane in use.
Shildon and Bishop Auckland East	Down and Up and Single <b>BLOCKED</b>	07 30 to 16 30. Trackwork between 8m. 46chs. and 9m. 42chs.

**TUESDAY 10 to FRIDAY 13 SEPTEMBER**

Shildon and Bishop Auckland East	Single <b>BLOCKED</b>	00 01 to 06 00 daily. Trackwork between 8m. 46chs. and 9m. 42chs.
----------------------------------	--------------------------	---

**FERRYHILL (SOUTH JN.) TO NORTON ON TEES SOUTH**

**DAILY UNTIL FURTHER NOTICE**

Bishop Middleham and Stillington	Down and Up	08 00 to 18 00. Earthwork at 6m. 23chs. Off-track machines in use.
----------------------------------	-------------	--

**SUNDAY 8 SEPTEMBER**

Ferryhill (South Jn.) and Norton-on-Tees West	Down and Up <b>BLOCKED</b>	08 30 to 18 30. Trackwork between ½ and 10m.p. <b>Return trips of Hartlepool to Thrislington and Hartlepool to Coxhoe trains to be diverted via Darlington.</b> Off track machine in use.
---	-------------------------------	--

**FERRYHILL (TURSDALE JN.) TO PELAW VIA LEAMSIDE**

**DAILY UNTIL FURTHER NOTICE**

Whitwell and Fencehouses	Down and Up	07 30 to 16 30. Earthwork between 9m. 10chs. and 9½m.p. Off track machines in use.
Fencehouses and Penshaw North	Down and Up	07 30 to 19 00. Bridgework No.52A. Off track machines in use.
Washington and Wardley	Down and Up	07 00 to 17 00. Bridgework No.64A. Off track machines in use..



SECTION B – TEMPORARY ENGINEERING WORKS – continued

At or between	Lines affected	Remarks
<b>FERRYHILL (TURSDEALE JN.) TO PELAW VIA LEAMSIDE – continued</b>		
<b>SUNDAY 8 to MONDAY 9 SEPTEMBER</b>		
Washington and Wardley	Down and Up <b>BLOCKED</b>	23 00 Sun to 05 00 Mon. Overhead line maintenance at 18 m. 77 chs.
<b>MONDAY 9 to THURSDAY 12 SEPTEMBER</b>		
Washington and Wardley	Down	08 00 to 16 00 Daily. Trackwork between 17 m. 0 chs. and 19 m. 10 chs. On track machine in use. Follingsby auto barriers manned.
<b>TUESDAY 10 SEPTEMBER</b>		
Penshaw North and Fencehouses	Up	08 00 to 16 00. Trackwork between 14 m. 31 chs. and 14 m. 74 chs. On track machine in use.
<b>WEDNESDAY 11 SEPTEMBER</b>		
Whitwell and Fencehouses	Down	08 30 to 15 30. Trackwork between 9 m. 5 chs. and 10 m.p. On track machine in use.
<b>FRIDAY 13 SEPTEMBER</b>		
Fencehouses and Penshaw North	Down	08 00 to 16 00. Trackwork between 14 m. 10 chs. and 14 m. 50 chs. On track machine in use.
<b>CONSETT NORTH TO OUSTON JN.</b>		
<b>SUNDAY 8 SEPTEMBER</b>		
Beamish and South Pelaw	Down and Up <b>BLOCKED</b>	04 00 to 20 00. Trackwork between 3 m 27c. and 3 m 1c. (Down) Cranes in use.
<b>NEWCASTLE (MANORS JN.) TO TYNEMOUTH VIA BACKWORTH</b>		
<b>SUNDAY 8 SEPTEMBER</b>		
Benton Station Jn.	Down and Up	07 30 to 17 00. Trackwork. (North West Curve).
Newcastle (Heaton South Jn.) and Manors	Down and Up Tyne <b>BLOCKED</b>	00 01 to 09 00. Demolishing staircase at Heaton Station.
<b>BENTON NORTH WEST CURVE</b>		
<b>SUNDAY 8 SEPTEMBER</b>		
Benton St. Jn.	Down and Up	07 30 to 17 00. Trackwork. (North West Curve).
<b>RIVERSIDE BRANCH</b>		
<b>DAILY UNTIL FURTHER NOTICE</b>		
Riverside Jn. and St. Peters	Down and Up	07 00 to 18 00. Work on bridge No.8. Crane and Off track machines in use. (74/26)
<b>SATURDAY 7 to MONDAY 9 SEPTEMBER</b>		
Riverside Jn. and St. Peters	All <b>BLOCKED</b>	16 00 Sat to 08 00 Mon. Bridgework on bridge No.8 Cranes and off track machine in use.
<b>HEATON SOUTH JN. TO TYNEMOUTH VIA WALLSEND</b>		
<b>FRIDAY 13 SEPTEMBER</b>		
Percy Main and Howdon	Up <b>BLOCKED</b>	00 15 to 05 15. Trackwork.

# SECTION B—TEMPORARY ENGINEERING WORKS—continued

At or between	Lines affected	Remarks
<b>NORTHALLERTON (BOROUGHBRIDGE ROAD) TO GATESHEAD (HIGH LEVEL BRIDGE) VIA HORDEN</b>		
<b>DAILY UNTIL FURTHER NOTICE</b>		
Long Lane and Picton	Down and Up Main	07 30 to 14 30. Trackwork between 52 and 52½m.p. Off track machines in use. 74/24
Cliff House	Down	08 00 to 16 00. Trackwork. Off track machines in use.
Ryhope Grange and Hall Dene	Up	08 00 to 17 00. Earthwork between 86¾m.p. and 86m. 30chs. Off track machines in use.
Seaham	Down and Up	07 30 to 16 30. Platform work (See Section 'D'). 74/32
Ryhope Grange	Up	07 00 to 17 00. Trackwork between 88m.p. and 87m. 54chs. Off track machines in use.
<b>SATURDAY 7 to SUNDAY 8 SEPTEMBER</b>		
Greatham and Billingham	Up <b>BLOCKED</b> Down <b>Between Trains</b>	23 30 Sat to 07 30 Sun. Off track machines in use.
Church St. and Clarence Rd.	23 45 Sat to 05 30 Sun Down and Up Main <b>BLOCKED</b> 05 30 to 07 30 Sun Down and Up Main <b>Between Trains</b>	23 45 Sat to 05 30 Sun. Earthwork between 71m. 45chs. and 72m. 5chs. 00 01 to 07 30 Sun. Dismantling water columns.
Cliff House and Stranton	All <b>BLOCKED</b>	23 45 Sat to 05 15 Sun. Earthwork at 70m. 10chs.
<b>SUNDAY 8 SEPTEMBER</b>		
Low Gates and Picton	Down and Up <b>BLOCKED</b>	07 00 to 19 30. Trackwork between 50m. 79chs. and 52m. 23chs. Overhead line maintenance at 52m. 32chs. <b>Possession given up to pass 1A29, 13 45 Newcastle to Kings Cross on Up Low Gates.</b> On track machine in use. 07 00 to 19 30. Crane in use. Brompton, Welbury and Rounton Gates auto barriers manned.
Picton and Eaglescliffe (South Jn.)	Down and Up <b>BLOCKED</b>	07 00 to 14 45. Trackwork at 56 m.p. Bridgework at Yarm viaduct.
Long Lane and Picton	All	07 30 to 16 30. S. & T. work.
Eaglescliffe Sth. Jn.	All	07 30 to 16 30. Trackwork.
Eaglescliffe (South Jn.) North Shore	Down and Up Stockton Main	07 30 to 16 30. S. & T. work.
Cliff House and Stranton	Down and Up Main	06 00 to 16 00. Trackwork between 70m. 10chs. and 70m. 25chs. Crane in use.
Tile Sheds	All	07 30 to 17 00. S. & T. work.
Pelaw and Gateshead	Down Goods <b>BLOCKED</b>	07 00 to 16 00. Trackwork between 98¼ and 99¾m.p. <b>Trains to travel on Pelaw Main.</b>
<b>TUESDAY 10 and WEDNESDAY 11 SEPTEMBER</b>		
Greatham and Billingham	Up <b>BLOCKED</b>	00 01 to 05 00. Trackwork between 65m. 40chs. and 63m. 70chs. <b>Single line working over down.</b> On track machines in use.
<b>THURSDAY 12 SEPTEMBER</b>		
East Boldon and Boldon Colliery	Down <b>BLOCKED</b>	00 01 to 05 00. Trackwork between 93m. 31chs. and 94m. 14chs. <b>Single line working over Up.</b> On track machines in use. Boldon auto barriers manned.

SECTION B – TEMPORARY ENGINEERING WORKS – continued

At or between	Lines affected	Remarks
<b>BILLINGHAM BECK BRANCH</b>		
<b>DAILY UNTIL FURTHER NOTICE</b>		
North Shore and Haverton Hill South	08 00 to 16 00 Single <b>BLOCKED</b> 16 00 to 22 00 Single <b>Between Trains</b>	08 00 to 22 00. Bridgework No.5B. Crane and off track machines in use.
North Shore and Haverton Hill South	Single	08 00 to 17 00. Earthwork between 62¼ m.p. and 63m. 5chs. Off track machines in use.
<b>TUESDAY 10 SEPTEMBER</b>		
North Shore and Haverton Hill South	Single <b>BLOCKED</b>	08 00 to 16 00. Trackwork at 63¼ m.p. Crane in use.
<b>BILLINGHAM-ON-TEES TO PORT CLARENCE (PHILLIPS SIDINGS G.F.)</b>		
<b>DAILY UNTIL FURTHER NOTICE</b>		
Belasis Lane and Haverton Hill Station	All	08 00 to 17 00. Earthwork between 1m. 19chs. and 1m. 24chs. Off track machines in use.
<b>HENDON BRANCH</b>		
<b>DAILY UNTIL FURTHER NOTICE</b>		
Hendon Jn.	All	08 00 to 18 00. Demolition at 1m. 48chs. 74/25
<b>LONDONDERRY BRANCH</b>		
<b>DAILY UNTIL FURTHER NOTICE</b>		
Hendon	Sidings	08 00 to 16 00. Trackwork. Off track machines in use.
Londonderry	Up Main	07 00 to 17 00. Trackwork between ½ and 0m.p. Off track machines in use.
<b>PALLION YARD TO HENDON JN.</b>		
<b>DAILY UNTIL FURTHER NOTICE</b>		
Pallion Yard and Hendon	Single	08 00 to 16 00. Trackwork. Off track machines in use.
Pallion Yard and Hendon	Single	08 00 to 16 00. Bridgework 21. Off track machines in use.
Pallion Yard and Hendon	Single	08 00 to 17 00. Earthwork at 0m. 70chs. Crane and off track machines in use. 74/26
Hendon Jn.	All	08 00 to 18 00. Demolition at 0m. 76chs. 74/25
<b>SUNDAY 8 SEPTEMBER</b>		
Pallion Yard and Hendon Jn.	Single <b>BLOCKED</b>	08 00 to 17 00. Trackwork between 0 m.p. and 5chs.

**SECTION B – TEMPORARY ENGINEERING WORKS – continued**

At or between	Lines affected	Remarks
<b>PELAW TO SOUTH SHIELDS</b>		
<b>DAILY UNTIL FURTHER NOTICE</b>		
Pelaw and Harton	All	07 00 to 17 00. Earthwork and Bridgework No.12A and platform at Jarrow. Off track machines in use.
Harton	Down Main	08 00 to 18 00. Demolition between 5m. 7chs. and 5m. 25chs. Off track machines in use.
<b>TUESDAY 10 SEPTEMBER</b>		
Harton and Pelaw	00 30 to 05 15 Up <b>BLOCKED</b> 05 15 to 07 00 Up Between Trains	00 30 to 07 00. Trackwork between 5m. 70chs. and 2m. 75chs. <b>Possession given up to pass Oil trains as necessary.</b> On track machines in use.
<b>WEDNESDAY 11 SEPTEMBER</b>		
Pelaw and Harton	00 01 to 04 45 Down <b>BLOCKED</b> 04 45 to 07 00 Down Between Trains	00 01 to 07 00. Trackwork between 1m.p. and 4m. 11chs. <b>Possession given up to pass Oil trains as necessary.</b> On track machines in use.
<b>GATESHEAD HIGH STREET JN. TO GREENSFIELD JN.</b>		
<b>SUNDAY 8 SEPTEMBER</b>		
Gateshead (Greensfield) and High Street Jn.	Down Greensfield	00 30 to 10 30. Trackwork between 0 and ¼m.p.
<b>DARLINGTON (SOUTH JN.) TO SALTBURN</b>		
<b>DAILY UNTIL FURTHER NOTICE</b>		
Urlay Nook and Eaglescliffe (South Jn.)	Down and Up	07 00 to 17 00. Earthwork and cable laying at Allen's West. Off track machines in use.
Thornaby East Jn. and Newport East Jn.	Down and Up Main Up Goods No.1	08 00 to 18 00. Bridgework No.28B. Crane and off track machines in use.
<b>SATURDAY 7 to SUNDAY 8 SEPTEMBER</b>		
Grangetown and Redcar	23 30 Sat to 16 00 Sun Up Main <b>BLOCKED</b> 23 45 Sat to 10 00 Sun Down Main <b>BLOCKED</b> 10 00 to 16 00 Sun Down Main Between Trains	23 30 Sat to 16 00 Sun. Trackwork between 20m. 48chs. and 21m. 33chs. (Up). <b>10 00 to 16 00. Single line working over Down Main.</b> Cranes and traxcavators in use.
<b>SUNDAY 8 SEPTEMBER</b>		
Eaglescliffe (South Jn.) and Bowesfield	Down and Up Middlesbrough Main	07 30 to 16 30. S & T work.
Tees	Down and Up Main	08 00 to 16 00. S & T work.
Redcar and Longbeck	Down and Up Main	07 30 to 16 30. S & T work.
Eaglescliffe South Jn.	All Lines	07 30 to 16 30. S & T work.
South Bank and Grangetown	All	07 30 to 15 00. Bridgework No.50A.

SECTION B – TEMPORARY ENGINEERING WORKS – continued

At or between	Line affected	Remarks
<b>TEES, THORNABY EAST JN. TO GUISBOROUGH JN. (GOODS LINES)</b>		
<b>DAILY UNTIL FURTHER NOTICE</b>		
Tees Yard	All	08 00 to 18 00. Bridgework No.28B. Crane and off track machines in use.
<b>SUNDAY 8 SEPTEMBER</b>		
Tees	Down and Up Goods	08 00 to 16 00. S & T work.
Thornaby East Jn. and Newport East Jn.	Down Goods No.1 <b>BLOCKED</b>	05 00 to 15 00. Trackwork between 12m. 70chs. and 13½ m.p.
<b>MIDDLESBROUGH (GUISBOROUGH JN.) TO WHITBY</b>		
<b>DAILY UNTIL FURTHER NOTICE</b>		
North Ormesby and Nunthorpe	Down and Up	Bridgework No. 13A. Crane and off track machines in use.
<b>LONGBECK (SALTBURN WEST JN.) TO BOULBY (CLEVELAND POTASH SIDINGS)</b>		
<b>DAILY UNTIL FURTHER NOTICE</b>		
Saltburn West Jn. and Crag Hall	Single	08 00 to 16 00. Work on viaduct at 28m. 16chs. Off track machines in use.
<b>SUNDAY 8 SEPTEMBER</b>		
Saltburn West Jn. and Crag Hall	Single <b>BLOCKED</b>	07 00 to 17 00. Trackwork between 27 and 32 m.p.
<b>NEWCASTLE TO CARLISLE (PETTERIL BRIDGE JN.) EXCLUSIVE.</b>		
<b>DAILY UNTIL FURTHER NOTICE</b>		
Prudhoe and Dilston	Down	08 00 to 16 00. Platform work at Stocksfield Station. (See Section 'D')
Hexham and Warden	Down and Up	08 00 to 17 00. Bridgework No.81A. Crane in use. 74/29
<b>SUNDAY 8 SEPTEMBER</b>		
Cowens Crossing and Prudhoe	Down and Up <b>BLOCKED.</b>	00 01 to 11 00. Trackwork between 6m 49chs and 7m 16chs. Possession given up to pass 1E55 02 50 Carlisle to Newcastle on Up Main. Cranes in use.
Haltwhistle and Low Row	00 30 to 16 00 Up <b>BLOCKED</b> 01 00 to 10 30 Down <b>BLOCKED</b> 10 30 to 16 00 Down <b>Between Trains</b>	00 30 to 16 00. Trackwork between 43m. 65chs. and 44m.p. Possession given up to pass 1E55 02 50 Carlisle to Newcastle on Down under single line working conditions. 10 30 to 16 00 Single line working over Down. Cranes in use.
Petteril Bridge Jn. and Corby Gates	Up <b>BLOCKED</b>	14 00 to 17 00. Trackwork between 59¼ and 58¾mp. On track machines in use.
<b>TUESDAY 10 and WEDNESDAY 11 SEPTEMBER</b>		
Bardon Mill and Haydon Bridge	Up <b>BLOCKED</b>	00 01 to 06 00 Daily. Trackwork between 29m. 10chs. and 28½m.p. Single line working over Down Bardon Mill Crossing manned.
<b>WEDNESDAY 11 SEPTEMBER</b>		
Haydon Bridge and Bardon Mill	Up	08 30 to 15 30. Trackwork between 28m. 40chs. and 29m. 10chs. On track machines in use.

SECTION B – TEMPORARY ENGINEERING WORKS – continued

At or between	Lines affected	Remarks
<b>NEWCASTLE TO CARLISLE (PETTERIL BRIDGE JN.) EXCLUSIVE—continued</b>		
<b>THURSDAY 12 SEPTEMBER</b>		
Blenkinsop and Low Row	Up	08 30 to 15 30. Trackwork between 44m. 0chs. and 43m. 66chs. On track machine in use.
<b>THURSDAY 12 and FRIDAY 13 SEPTEMBER</b>		
Prudhoe and Hexham	Down <b>BLOCKED</b>	00 45 to 05 00. Trackwork between 13m. 0chs. and 17m. 60chs. and between 13 and 19m.p. <b>Single line working over Up.</b> On track machines in use.
<b>GATESHEAD (GREENSFIELD JN. DUNSTON LINES) TO BLAYDON VIA NORWOOD</b>		
<b>DAILY UNTIL FURTHER NOTICE</b>		
Norwood Jn.	Down and Up Blaydon	08 00 to 18 00. Bridgework Nos.18A and 19. Off track machines in use.
Norwood Jn.	All	07 00 to 17 00. Demolishing former signal box.
Norwood Jn.	Down and Up Blaydon	08 00 to 17 00. Bridgework No.1. Off track machines in use.
Norwood Jn. and Blaydon	Down and Up Blaydon	08 00 to 17 00. Bridgework No.33 and Earthwork at 4m. 64chs. Off track machines in use.
Blaydon and Norwood Jn.	Up Blaydon	08 00 to 18 00. Earthwork between 4m. 64chs. and 4m. 51chs. Off track machines in use.
<b>TUESDAY 10 SEPTEMBER</b>		
Norwood Jn. and Blaydon	Down Blaydon	08 00 to 15 30. Trackwork between 3 and 4m.p. On track machine in use.
<b>DUNSTON STAITHS</b>		
<b>DAILY UNTIL FURTHER NOTICE</b>		
Dunston Staiths	Sidings	08 00 to 16 30. Trackwork. Off track machines in use.
<b>HALTWHISTLE TO ALSTON</b>		
<b>DAILY UNTIL FURTHER NOTICE</b>		
Haltwhistle and Alston	Single	08 00 to 17 00. Earthwork at 12m. 16chs. Off-track machines in use.
<b>BACKWORTH TO MORPETH VIA SEGILL</b>		
<b>DAILY UNTIL FURTHER NOTICE</b>		
Holywell and Newsham	Down and Up	06 30 to 18 00. Platform work at Seaton Delaval at 9m. 79chs. Off track machine in use. 74/33
Bedlington South and Newsham North	Down and Up	08 00 to 16 30. Platform work at Bebside station. Off track machine in use. 74/34
<b>SUNDAY 8 SEPTEMBER</b>		
Holywell and Newsham South	Down and Up <b>BLOCKED</b>	07 00 to 22 00. Platform work at Hartley. Off track machine in use.

**SECTION B – TEMPORARY ENGINEERING WORKS – continued**

At or between	Lines affected	Remarks
<b>BEDLINGTON TO LYNEMOUTH COLLIERY (N.C.B.)</b>		
<b>DAILY UNTIL FURTHER NOTICE</b>		
Ashington	Down and Up	08 00 to 17 00. Bridgework No.5 and building at 3m. 1chs. Off track machines in use.
<b>NEWSHAM TO ISABELLA COLLIERY</b>		
<b>DAILY UNTIL FURTHER NOTICE</b>		
Newsham South and Isabella Colliery	Sidings	07 30 to 16 30. Trackwork. Off track machine in use.
<b>CAMBOIS BRANCH</b>		
<b>DAILY UNTIL FURTHER NOTICE</b>		
Winning and Freemans	Down and Up	08 00 to 18 00. Bridgework No.1A. Off track machines in use.

**SECTION C**

**SIGNALLING AND PERMANENT WAY ALTERATIONS**

\* \* Items marked thus will not appear in future issues and a note must be taken of them by all concerned.

**DETAILS OF WORK REFERRED TO IN SECTION B**

**SUNDAY 8 SEPTEMBER – LITTLE MILL, CRISTON BANK AND CHATHILL**

Christon Bank signal box will be abolished, and Little Mill and Chathill signal boxes will then be in direct communication.

Christon Bank Down colour light signal CB11, will be replated C4, and Christon Bank Up colour light signal CB15 will be replated C5, and the signal post telephones on these signals will be connected to Chathill signal box.

Closed Circuit Television equipment will be installed in Chathill signal box, to enable the signalman to supervise the working of Christon Bank level crossing. (39)

**DETAILS OF WORK ALREADY CARRIED OUT**

**NORTH SHORE**

The following points and connections have been secured out of use in a normal position pending removal :-

Down Main – Shunting line  
Shunting line – Down Sidings

The following signals have been abolished :-

Down Main – Down Sidings  
Down Main – Shunting Line  
Shunting Line – Shunting Line (down direction)  
Shunting – Shunting Line to Down Sidings  
Shunting – Down Sidings to Up Main, or to Down Main, or to Shunting Line.  
Shunting – Shunting Line (Up direction) or to Up Main, or to Down Main. (New Item)(39)

**NEWCASTLE (MANORS JN.)**

The trailing crossover between the Down and Up North lines has been repositioned 77 yards further North.

The associated ground position light signal (No.15) on the Down North has been repositioned to the point ends of the repositioned crossover and on the cess side of the Down North. (New Item)(39)

**CRISTON BANK AND CHATHILL**

The supervision of Fallodon Automatic half-barriers has been transferred from Criston Bank to Chathill signal box.

Christon Bank Down colour light signal CB12 (last signal before reaching the level crossing), has been converted to a fully automatic signal and replated D43. (38)

**CLIFF HOUSE (B.S.C. SOUTH WORKS)**

Signals Nos. 1, 3, 4, 6 and 7, at the Cliff House end of the B.S.C.'s sidings have been replaced by ground position light signals.



**SECTION C – SIGNALLING AND PERMANENT WAY ALTERATIONS – continued**

**DETAILS OF WORK ALREADY CARRIED OUT – continued**

**CLIFF HOUSE (B.S.C. SOUTH WORKS) – continued**

Route indication has been provided on the following signals:—

No.1 Signal – UM – B.S.C. Up Main  
EGH – "E" Grid High

No.4 Signal – UM – B.S.C. Up Main  
EGL – "E" Grid Low

(38)

**SEAHAM**

The Up Goods miniature arm shunting signal to Down Main or to Up Main, has been replaced by a ground disc signal.

(38)

**BOLDON COLLIERY STATION AND TYNE DOCK BOTTOM**

Tyne Dock Bottom Ground Frame has been abolished.

The points leading from the Yard to the Departure line has become hand-worked.

The points leading from the Arrival to the Independent, have been secured out of use in the normal position.

The points leading from the Departure to the Yard have been secured out of use in the reverse position.

The points leading from the Independent to the Arrival line have been disconnected.

All "STOP FOR ORDERS" notice boards have been withdrawn, except for the one on the Arrival line before reaching Tyne Dock Bottom.

(38)

**SLEIGHTS**

The Ground Disc Shunting Signal applying set-back from Single line to Goods Yard, now additionally applies towards the Up Platform line occupied.

(37)

**WALKER**

St. Anthonys Tar Co. Ground Frame, has been abolished and the points leading from Up Main to Siding, have been secured out of use in the normal position pending removal.

(37)

**YORK MOTIVE POWER DEPOT**

The ground position light shunting signal No.Y.223, on the loco Inlet line has been replaced by a "LIMIT OF SHUNT".

(37)

**GREENLAND**

The following points have been dispensed with:—

Up Goods to Reception No.1

Down Goods to Down Siding No.2

Down Goods to Stanley Sidings No.3.

Up Goods to Stanley Sidings No.1

Reception lines crossover

Stanley Sidings No.3 to No.2 (secured out of use in the normal position pending removal).

Up Goods/Stanley Sidings No.4

Stanley Sidings No.4/Reception No.1

The following points have been made hand worked:—

Stanley Sidings No.3/No.2

Stanley Sidings No.4/No.3

**SECTION C – SIGNALLING AND PERMANENT WAY ALTERATIONS – continued**  
**DETAILS OF WORK ALREADY CARRIED OUT – continued**  
**GREENLAND – continued**

The following signals have been dispensed with:—

- Down Goods to Down Sidings
- Shunting Down Sidings No.2 to Down Goods
- Up Goods to Exchange Siding
- Shunting Stanley Sidings No.1 to Up Goods.
- Down Goods to Stanley Sidings No.2, and No.3.
- Up Goods to Stanley Sidings No.2 or No.3 or No.4
- Shunting Reception No.2.
- Stanley Sidings No.2 to Reception No.2 or No.1 or Up Goods
- “ “ No.3 “ “ “ “ “ “ “ “
- “ “ No.4 “ “ “ “ “ “ “ “
- Reception No.2 (Up direction)

(38)

**\* \* STANNINGTON AND MORPETH**

Clifton level crossing gates have been replaced by lifting barriers controlled from the Gate Box. (36)

**BERWICK**

The notice board worded “**ENGINES MUST NOT PASS THIS BOARD EXCEPT ON AUTHORITY OF SIGNALMAN**” applicable to movements into the Down Goods Loop No. 2 has been removed temporarily. Drivers of trains working into this Loop must stop short of the connections leading to the Down Yard. (UFN)

**BELFORD**

The facing Main to Main crossover at 51m. 38chs. has been temporarily secured out of use until further notice, pending replacement. (UFN)

---

## GENERAL INSTRUCTIONS AND NOTICES

★ Denotes new or amended item

\* Items marked thus will not appear in future issues and a note must be taken of them by all concerned.  
 \*\*

## ALTERATIONS TO SUPPLEMENTARY OPERATING INSTRUCTIONS

Page 3 Northern Area dated 27 July 1974.

## CONTINENTAL FERRY WAGONS

Add:—

Special dispensation applies to certain 'S' type vehicles when conveyed on 6S72, 14 55 SX Parkeston Quay — Edinburgh — Glasgow and 6E87, 14 16 ex Glasgow — Edinburgh — Parkeston Quay air braked services timed to a maximum speed of 60 m.p.h. Details are published in the Sectional Appendix, page 257 Northern and page 330 Southern and apply to these two services only. (38D)

## ALTERATIONS TO SECTIONAL APPENDIX (NORTHERN AREA)

## OTHER GENERAL INSTRUCTIONS

Page 257 (Page 135 S.O.I.)

## AIR BRAKED NETWORK SERVICES

Delete existing instructions and Add:—

**6S72 14 55 PARKESTON QUAY — EDINBURGH — GLASGOW**  
**6E87 14 16 GLASGOW — EDINBURGH — PARKESTON QUAY**

The above air-braked services are timed to a maximum speed of 60 m.p.h. and this speed must not be exceeded. They may convey Continental Ferry Wagons that comply with the following conditions:—

1. The vehicles concerned must be marked 'S' or 'SS' but must **not** be Italian Ferry Vans within the following number series:—

21 83 214 8 500	— 604
21 83 214 8 750	— 885
21 83 214 8 900	— 973
21 83 804 5 000	— 076
21 83 804 5 100	— 550
21 83 804 5 600	— 675
21 83 804 5 698	— 699
21 83 804 6 200	— 496
21 83 804 6 500	— 503
21 83 804 6 900	— 913

Vehicles in the above number series although marked 'S' are expressly prohibited from conveyance on these services.

2. Vehicles must bear labels with the load category indicated as 'M', 'L' or 'E'.

Before the trains commence their journey or leave any intermediate point at which Continental Ferry Wagons are attached, the guard must be in possession of a signed certificate or certificates from the CM&EE's staff confirming that all the Ferry Wagons on the train have been examined and are marked 'S' or 'SS'. In addition, the guard or train-preparer must confirm that the vehicles bear 'M', 'L' or 'E' load category labels. (Continental Ferry Wagons bearing 'H' category labels are expressly prohibited from conveyance on these trains). Upon being relieved, the guard must hand on the CM&EE certificates to his relief and, on arrival at destination, must transfer such certificates to a member of the Yard staff. The Area Manager, Glasgow High Street, and the Shipping & Port Manager, Parkeston Quay, must retain such certificates for inspection when required.

To cater for Continental Ferry Wagons which, to conform with marshalling instructions, may be required to be formed in any part of the train the above trains must at all times run under single air-brake pipe operation. This will apply whether or not Continental Ferry Wagons are actually conveyed, and paras. 2.5 and 2.6 of the Regulations for Working the Automatic Air-Brake on Locomotive-Operated Trains are accordingly amended so far as these services are concerned.

**SECTION D – GENERAL INSTRUCTIONS AND NOTICES – continued**  
**ALTERATIONS TO SECTIONAL APPENDIX (NORTHERN AREA) – continued**  
**OTHER GENERAL INSTRUCTIONS – continued**

**Page 257 (Page 135 S.O.I.) – Add – continued**

**2 – continued**

The above instructions relate to the working of these two services only and, in all other cases, existing instructions on the maximum speed of Continental Ferry Wagons and the regulations for working the automatic air-brake on locomotive-operated trains must continue to be observed.

**SPECIMEN CERTIFICATE**

	LOCATION .....
	Date .....
TRAIN .....	
<p>I certify that I have examined the Continental Ferry Wagons on* /to be attached to * the above train and that these vehicles are marked 'S' or 'SS' and are not wagons with single link suspension owned by the Italian Railways (FS Wagon numbers commencing with 2183)</p> <p style="text-align: right;">(Signed) .....</p> <p style="text-align: right;">Grade .....</p>	
* Delete as necessary	

(38D)

**PROTOTYPE MARK 11 VEHICLE E.FK13252 FITTED WITH CHEMICAL TOILET**

"Eastern Region FK13252 working in the 07 58 Newcastle–Liverpool/15 10 Liverpool–Newcastle circuit is equipped with a prototype chemical toilet at one end of the vehicle. A blue lamp, situated in the transverse corridor at head height on the toilet partition, is illuminated when the equipment is switched "ON". The switch is situated in a control panel adjacent to the pressure ventilation control switch panel.

"Arrangements have been made for the equipment to be switched "ON" and "OFF" daily at Newcastle. The switch has two "ON" positions and one "OFF" position. Either "ON" position may be selected."

"If the blue lamp fails to illuminate the attention of the Carriage and Wagon Staff must be called. Lamp failure during the journey does not necessitate immediate attention, but the failure must be reported to the Carriage and Wagon Staff on the train's return to Newcastle."

**MISCELLANEOUS NOTICES**

**HEATON STATION**

Until further notice, Heaton Station Roof is being demolished. From Monday 2 September drivers of stopping trains on Down Tynemouth to bring their trains to a stand at marker provided and drivers of stopping trains on Up Tynemouth to draw forward so that rear vehicle is clear of access ramp.

**SEAHAM STATION**

Until further notice the platforms at Seaham are being resurfaced. Drivers of stopping trains to obey board showing 'Trains Stop Here'.  
 Handsignalman in attendance.

**SECTION D – GENERAL INSTRUCTIONS AND NOTICES – continued**  
**MISCELLANEOUS NOTICES—continued**

**McNEILS OCCUPATION LEVEL CROSSING**

Until further notice there will be greatly increased use of the occupation crossing situated between Wear Valley Junction and Harperley by Contractor's vehicle conveying sand and gravel.

**HARTLEPOOL SOUTH DURHAM STEEL AND IRON CO. LTD. SOUTH WORKS**

A temporary timber crossing has been brought into use between the South Works Signal Box and "A" Grid Sidings which is being used extensively by road vehicles.

**HEATON SIDINGS**

The following work is taking place between the hours of 08 00 and 17 00 Daily and until further notice, recovering redundant sidings and assets, demolishing redundant buildings, rerouting S. & T. cables and rewiring. Disconnections as required to points and signals in Heaton interlocking area. Off track machines in use.

**STOCKSFIELD STATION**

The East End of the Down Platform is being rebuilt.

**Drivers of stopping trains to bring their trains to a stand at a marker board provided.**

**SOUTH BANK**

The West end of the Up Platform is being rebuilt.

**Drivers of stopping trains to bring their trains to a stand at the marker board provided.**

**CROW HOUSE LEVEL CROSSING : THORNLEY COLLIERY BRANCH**

Increased use is taking place of Crow House level crossing at 1m. 07chs.

**BILLINGHAM BECK BRANCH**

A temporary level crossing has been brought into use over the single line at 63m. 14chs. adjacent to bridge No. 5B.

A crossing keeper will be in attendance.

**HEATON CARRIAGE SIDINGS**

A temporary level crossing over the Up Benton Goods and Portobello Sidings has been brought into use. A lookout man is in attendance.

**PENSHAW NORTH TO LAMBTON COKE WORKS – NCB ARRIVAL AND DEPARTURE LINES**

Contractors will be carrying out Permanent Way alterations and constructing a new underbridge in the vicinity of the existing accommodation road crossing adjacent to the weighbridge office.

In addition contractors will be constructing a new accommodation road crossing 50 yards South of the existing crossing. All Drivers and Guards to exercise great care and keep a sharp lookout for hand-signalmen and lookoutmen in attendance.

**PILMOOR AND THIRSK**

In connection with high speed diesel tests, transponders which are housed in a plastic case measuring 10" x 8" x 4" have been installed in the four footway at 200 metre intervals between 19m. 38chs. and 20m. 76chs.

**NEWCASTLE CENTRAL STATION (EAST END)**

Contractors will be working on roof above the Bay Platforms at the East End.

**HEATON STATION**

The Down North platform has been damaged for approximately 40 yards at the West end. Drivers of stopping trains to keep a sharp lookout and stop beyond marker provided.

**SECTION D – GENERAL INSTRUCTIONS AND NOTICES – continued****MISCELLANEOUS NOTICES – continued****PORT CLARENCE TO MONSANTO CHEMICAL SIDINGS BRANCH**

A temporary level crossing has been brought into use, over the single line in the vicinity of reclamation embankment.

**MIDDLESBROUGH GOODS YARD  
TEMPORARY LEVEL CROSSING**

An "Open" level crossing has been provided on the Marsh Branch side of Forty Foot Road open level crossing on the Cast Steel Bank line between the Middlesbrough Goods Yard and the Marsh Branch.

Movements over the crossing must not exceed 5 m.p.h. and the shunter accompanying each movement must precede the train on foot to safeguard the passage of the train over the level crossing.

**LOCOMOTIVE HAULED AIR BRAKED PASSENGER COACHING STOCK  
WORKING ON EAST COAST MAIN LINE SERVICES**

Difficulties have been experienced due to dragging brakes on Air Brake Passenger Trains working on the East Coast Main line. In an endeavour to identify the causes it has been decided that, until further notice, all passenger trains working over the East Coast Main Line route will be operated on a single pipe air brake system.

To operate the single pipe system the main reservoir pipe (yellow coupling head) **WILL NOT** be coupled as between the locomotive and the first vehicle. The main reservoir pipe on the locomotive and the first vehicle must remain on the respective bracket-dummies and the cocks in the closed position.

The above instructions in no way alter the regulations for working the automatic air brake on locomotive operated trains as contained in the General Appendix.

As, however, the main reservoir pipes are not connected it follows that the reading on the gauge in the Guard's brake for the main reservoir pipe will be zero.

**Disabled Trains Requiring Assistance in the Rear**

In the event of a train requiring assistance in the rear it will be necessary to revert to the two pipe system in order that assistance procedure as laid down in the General Appendix and drivers manual BR.33056/16 may be carried out.

**Repairs in Motive Power Depots Carriage Sheds Wagon Repair Sheds and Warehouses** – In connection with work being carried out at the undermentioned places, scaffolding or projections may be provided or unusual excavations may be made in the ground:–

Location	Nature of Work	Duration	Commencing date
Thornaby MPD	Painting depot buildings	Until further notice	
Thornaby MPD.	Contractor providing roller shutter doors on Nos.1 and 2 Straight Shed West Roads, No.5 West Road repair shed, 5 and 6 Roads East and West End Straight Shed and erecting Screen between 4 and 5 Road Straight Shed.	Until further notice.	
Thornaby MPD	General work in association with conversion of Roads 5 and 6 Straight Shed to Wagon Repair Shop. Track alterations and building work in progress.	Until further notice.	
Cambois MPD	Constructing car park adjacent to amenity block, machines unloading spoil from rail wagons.	U.F.N.	

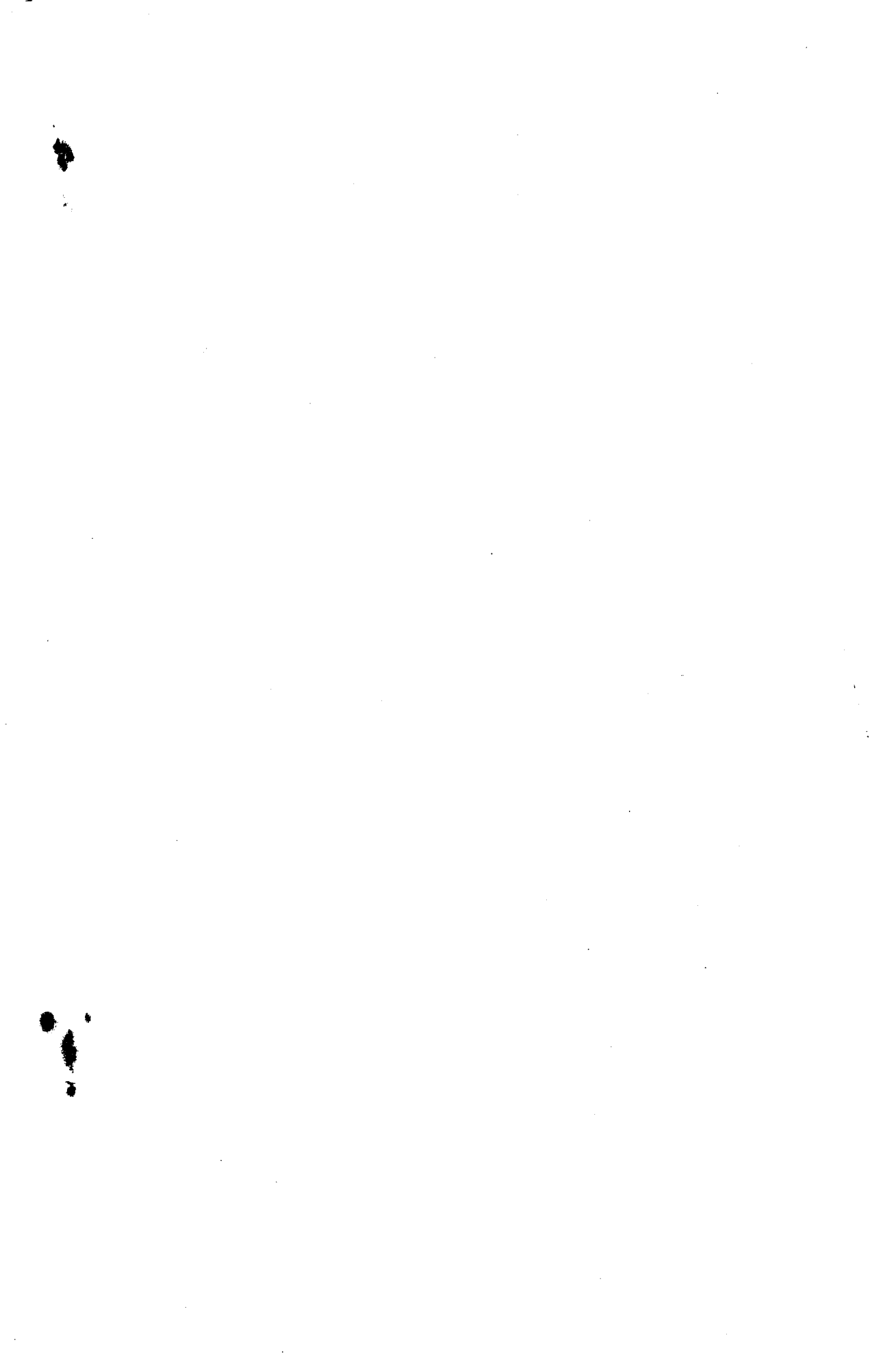
**A copy of this notice must be supplied to all Drivers, Guards, Signalmen and others concerned.**

York  
28 AUGUST, 1974

MO.45/NN

F.J. BURGE  
Chief Operating Manager

*Receipt of this notice need not be acknowledged. If the NN Notice is not received by the normal time advise your Superior Officer by wire as follows:– "NILE SIG. NOTICE NN NO:–"*



# **THIS CONCERNS YOU**

**COULD YOU —**

HELP AN INJURED COLLEAGUE?

ATTEND TO A PERSON TAKEN ILL? AT WORK? AT HOME?

GIVE CLEAR AND PRECISE INSTRUCTIONS IN THE CASE OF AN  
ACCIDENT?

**IF NOT —**

ARE YOU HAPPY TO LEAVE THESE JOBS TO SOMEBODY ELSE?

THERE MAY NOT BE ANYONE ELSE!!

WHY NOT JOIN YOUR LOCAL FIRST AID CLASS?

CONTACT YOUR STAFF OFFICE FOR DETAILS OR ONE OF THE  
DIVISIONAL AMBULANCE SECRETARIES. THEY WILL BE PLEASED  
TO HELP YOU TO HELP OTHERS.